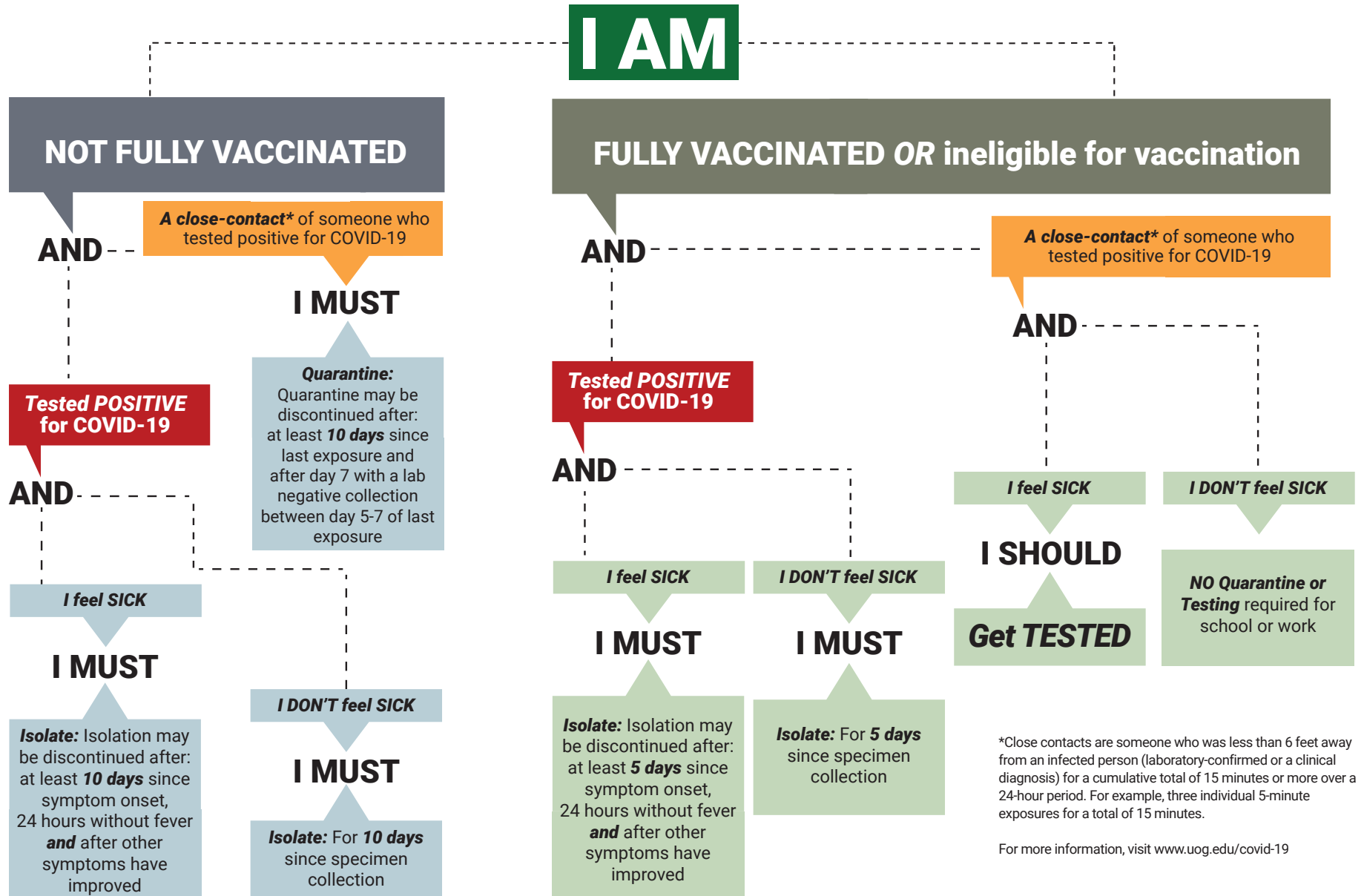


# UNIVERSITY OF GUAM Isolation and Quarantine Guidelines

(as of March 2, 2022)



\*Close contacts are someone who was less than 6 feet away from an infected person (laboratory-confirmed or a clinical diagnosis) for a cumulative total of 15 minutes or more over a 24-hour period. For example, three individual 5-minute exposures for a total of 15 minutes.

For more information, visit [www.uog.edu/covid-19](http://www.uog.edu/covid-19)

Based on Executive Order 2021-32 and DPHSS Guidance Memo 2021-16 Rev. 1.

For official guidance, visit:

[https://dphss.guam.gov/wp-content/uploads/2022/01/DPHSS-GUIDANCE-MEMO-2021-16-REV02-01-28-2022\\_FINAL.pdf](https://dphss.guam.gov/wp-content/uploads/2022/01/DPHSS-GUIDANCE-MEMO-2021-16-REV02-01-28-2022_FINAL.pdf)

