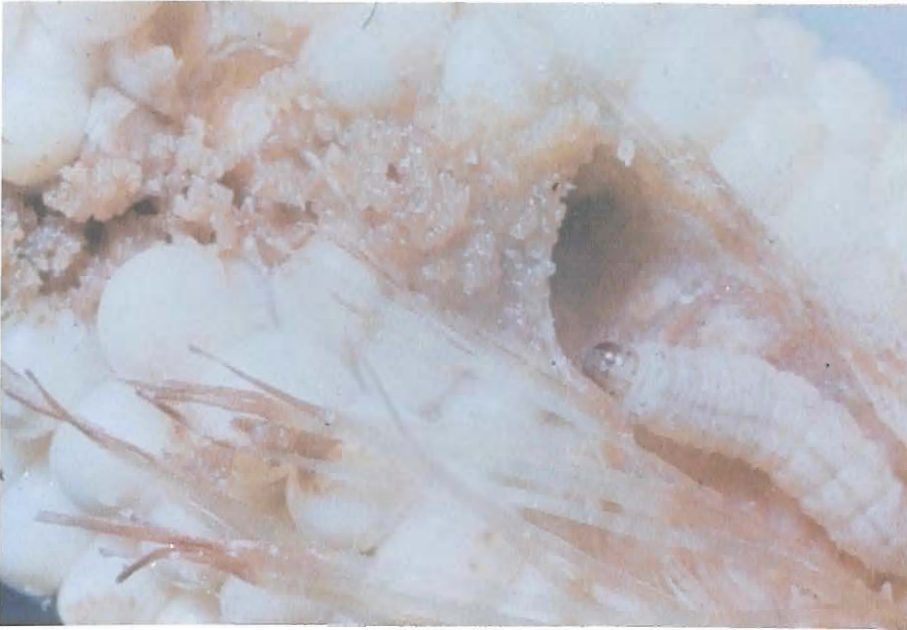


Cooperative Extension Service
UNIVERSITY OF GUAM
Pests of Guam Series
CIRCULAR NO. 1



(Photograph by: A. A. La Plante)

Asiatic corn borer
(Ostrinia furnicalis)

HOST PLANTS

This is a serious pest of Corn on Guam.

SYMPTOMS OF DAMAGE

In young corn plants the larvae (caterpillars feed by boring into whorls and stems. In mature plants, the larvae feed on the tassel and bore into the stems and ears. Often the stem or tassel breaks at the tunnelled regions due to wind.

LIFE CYCLE

Moths of this pest are yellowish brown in color and about 1 to 1¼ inch in size. Eggs are laid in groups on the leaves of young plants and on the tassel and silk of mature ones. Larvae feed by boring into different aerial parts such as the tassel, stem and ears of corn. Pupation takes place in the bore hole.

CONTROL

Twice a week spraying with Seven is required at 2 teaspoons per gallon of water. Control measures using insecticides should be aimed at killing the young larvae before they tunnel into the corn plant.

Prepared by:
R. Muniappan
Agricultural Experiment Station, University of Guam
Issued in furtherance of Cooperative Extension Work, Acts of
May 8 and June 30, 1914, in Cooperation with the U.S. Department of
Agriculture
Wilfred P. Leon Guerrero, Dean
Jose T. Barcinas, Associate, Dean
College of Agriculture and Business, Cooperative Extension Service
University of Guam