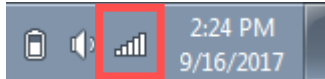
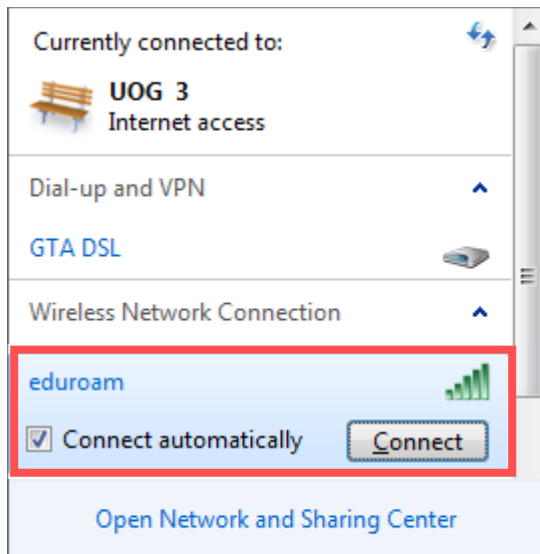


eduroam Wi-fi Setup Instructions: Windows 7 Device

1. Go to your Wi-fi Settings



2. Select eduroam and select Connect

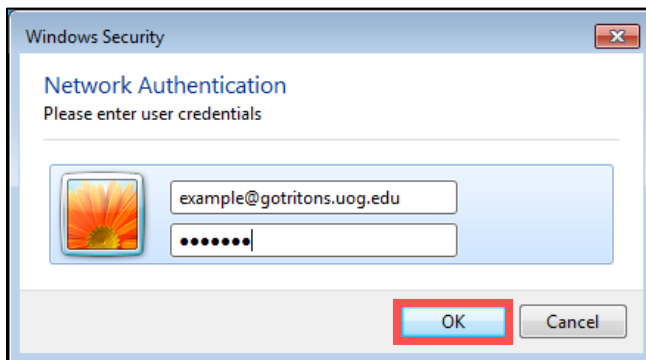


3. Enter your Username and Password. Then select OK.

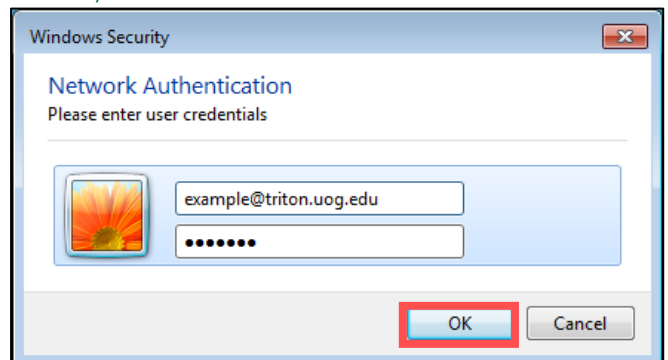
Username: **UOG Email Address**

Password: **Triton Portal Password**

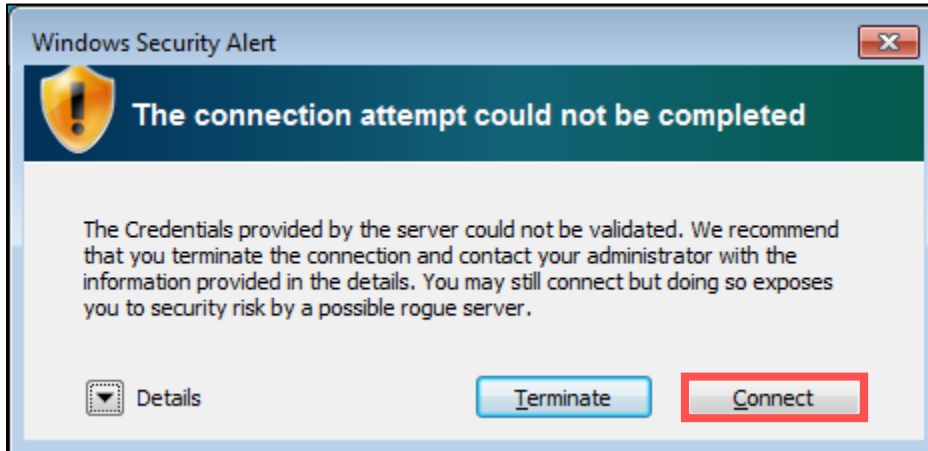
STUDENTS



STAFF / FACULTY



4. Verify Certificate Windows Security Alert by selecting **Connect**



5. You are now connected to eduroam!

