



**AMENDMENT 5**

**Invitation for Bid (IFB)  
UOG IFB No. B23-01**

Date Issued: July 25, 2023

**“INVITATION FOR MULTI-STEP SEALED BIDS FOR CONSTRUCTION SERVICES”**

This is to notify all prospective offerors of the following amendment set forth below:

**1.1 ADD Question & Answer Sheet 3 as set forth in the attached.**

All other terms and conditions remain the same.

A handwritten signature in black ink, appearing to read 'Abigail R.P. Martin'.

Abigail R.P. Martin  
Comptroller

---

Please acknowledge receipt and return by email to [uog.bids@triton.uog.edu](mailto:uog.bids@triton.uog.edu):

Name of company: \_\_\_\_\_

---

Print Name/Signature/date

UOG INVITATION FOR BIDS NO. B23-01:  
MULTI-STEP SEAL BID FOR CONSTRUCTION SERVICES

**QUESTION & ANSWER SHEET NO. 3**  
**July 25, 2023**

*In response to the written "Questions" and/or 'Request for Clarifications' UOG received.*

**Question 1:** Received 7/10/2023 11:32am Please confirm if the project schedule end date is Feb 9, 2025, or if we will follow the 580 calendar days of construction. If we will use 580 days, the construction period will end on April 6, 2025, assuming that the NTP will be released on September 4, 2023.

*Answer:* Please see page 39 of IFB's Instructions to Bidders, on Bid Form, Item 12: " ... 580 days Maximum or No Later Than Feb. 9, 2025, whichever is earlier". Any contract time past the February 9th, 2025, grant performance period requires EDA's approval prior to Notice of Award. Therefore, pending EDA approval, the Feb. 9, 2025, will not apply. However, 580 days will be the contract's maximum performance period.

**Question 2:** Received 6/29/2023 2:50pm Ian Corporation RFI #1.

*Answer:* See Attachment No. 5.

**Question 3:** Received 6/29/2023 3:34pm Future World Corporation RFI #1. Additional information provided for FWC RFI #1 previously posted on Amendment 4, Questions and Answer Sheet No. 2.

*Answer:* See Attachment No. 3.

**Question 4:** Received 7/19/2023 8:47am Core Tech International RFI #4.

*Answer:* See Attachment No. 1.

**Question 2:** Received 7/19/2023 4:36pm Future World Corporation RFI #4.

*Answer:* See Attachment No. 4.

# ATTACHMENT 1

## UOG IFB B23-01: INVITATION FOR MULTI-STEP SEALED BIDS FOR CONSTRUCTION SERVICES

ITEM	Question
RFI-4	07/18/23
1	In <b>Section 01 78 23</b> Operation and Maintenance Data 2.2 Requirements for Emergency, Operation & Maintenance Manuals B.8 it was mentioned to include the name and contact information for Commissioning Authority (CxA). In <b>Section 22 05 93</b> Testing and Balancing for Plumbing, there again mentions the scope of CxA. In this case, kindly please clarify whether the CxA is employed by the owner or by the general contractor. If by the general contractor, what are the other scope or duties to be fulfilled by CxA other than for plumbing where it was mentioned. Also, please verify if there is a requirement for total building commissioning for this project as there were no wordings of it on the specifications.
2	UOG WERI – Please provide a definite configuration on the Automatic Transfer Switch

### Responses:

1. CxA should be employed by the general contractor. Total building commissioning should be provided for the project. See attached specifications.
2. 500 amp/3 pole open transition, 480 volt, isolation/bypass. See spec section 26 36 00.



**FUTURE  
WORLD  
CORPORATION** General Contractor

P.O. Box 12554 Tamuning, Guam 96931 • Telephone: 1(671) 649-4147/48/49 • Facsimile: 1(671) 649-4158  
e-mail: futureworld@guam.net • website: www.futureworldcorp.net

## REQUEST FOR INFORMATION

PROJECT: UOG IFB-23-01	RFI NO.	1
------------------------	---------	---

Subject: **RFI for the list of Item** Date: **June 29, 2023**

To: **UOG Procurement** From: **Arnold Felizardo**

Company: Company: **Future World Corporation**

Contact No.: Contact No.: **998-1008**

We are sending you attached via:  e-mail  hand carry

Specification Reference	Plan Reference	Discipline
Item	Description	
1	Please see attached 5-page Electrical plan of Nursing Annex Building with our query.	
2	Kindly provide us specification for Accordion Doors	
3	According to our supplier, Armstrong Medintech, Resilient Sheet for Nursing and WERI, is discontinued, and our vendor is offering us Mature Advantage by Toli which is well suited for HealthCare Facilities because it has Anti-Viral Coating	

**A & E Response:**

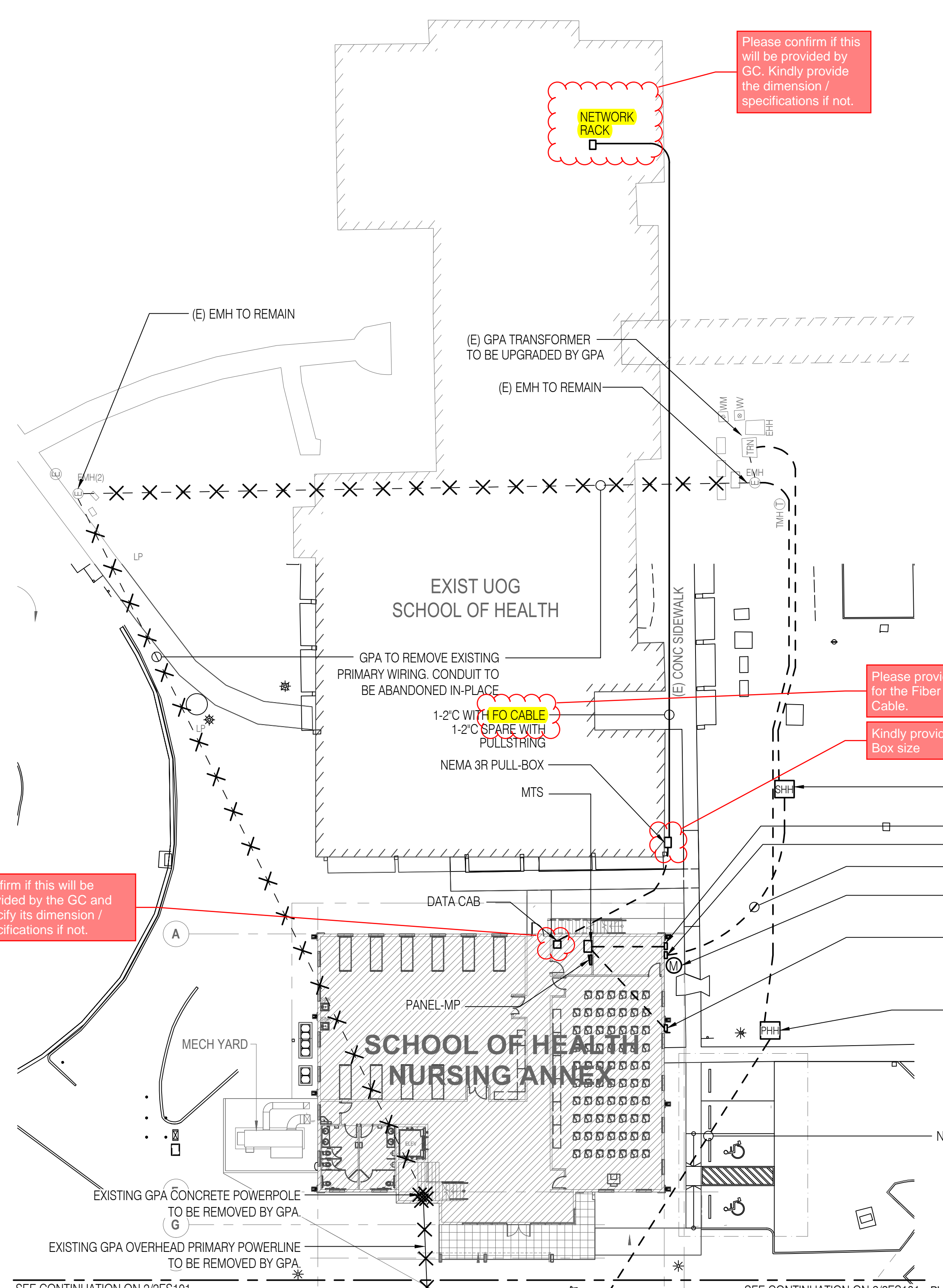
**RIM Response 7/20/2023**

1. See Electrical Responses by Electrical Engineer.
2. See attached Specifications Section 083513 Accordion Folding Doors.
3. Proposed alternate is acceptable.

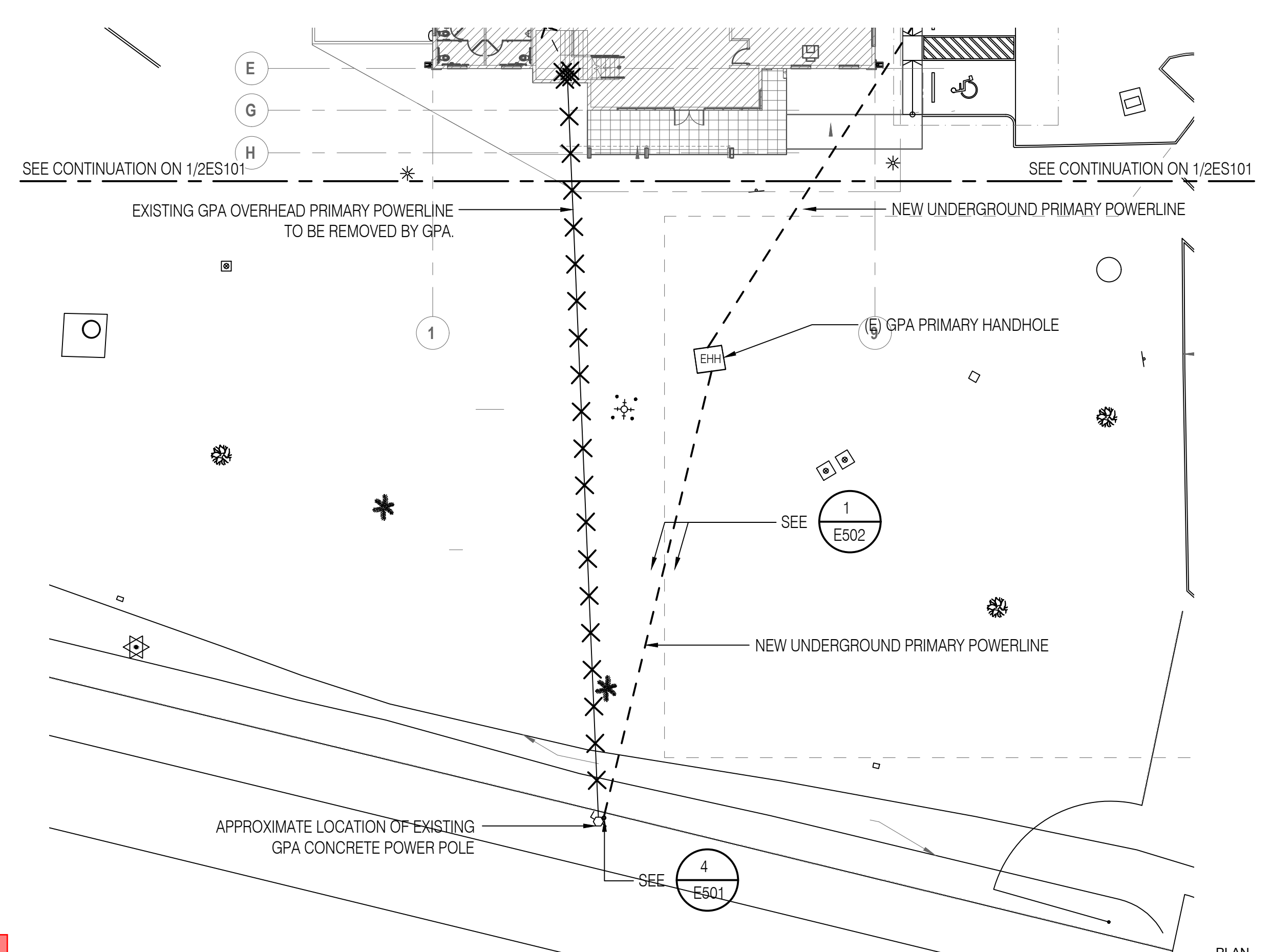
Received By: \_\_\_\_\_ Submitted By:  \_\_\_\_\_  
Representative Arnold Felizardo / Proj. Engineer

Physical Address: 954 Army Drive, Barrigada Heights, Guam 96913 Telephone: 671-649-4147  
 Mailing Address: P.O. Box 12554, Tamuning, Guam 96931  
 Website: www.futureworldguam.com

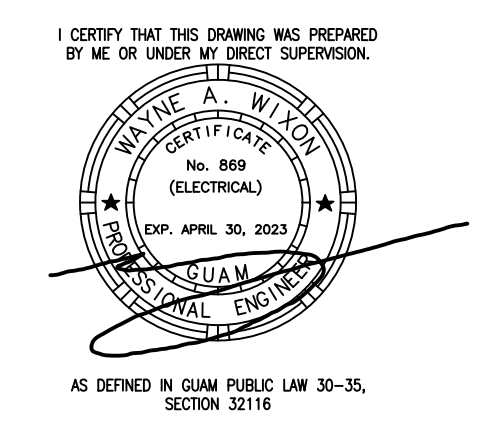
# ITEM 1



SEE CONTINUATION ON 2/2ES101  
**1 SITE ELECTRICAL PLAN SECTION A - NURSING BUILDING ANNEX**  
 2ES101 1" = 20'-0"  
 0" 10' 20' 40' PLAN NORTH



SEE CONTINUATION ON 1/2ES101  
**2 SITE ELECTRICAL PLAN SECTION B - NURSING BUILDING ANNEX**  
 2ES101 1" = 20'-0"  
 0" 10' 20' 40' PLAN NORTH



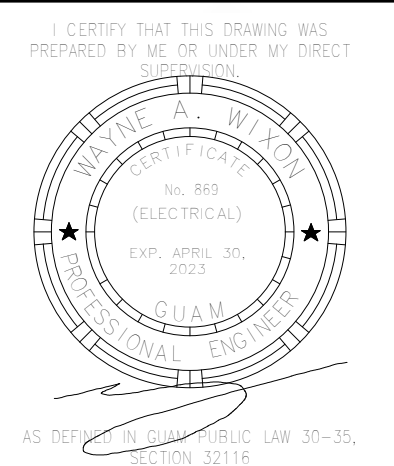
## BID/PERMIT SET

**Project Title:** School of Health - Nursing Annex  
**EDA Project No.:** 07 79 07657 UOG Scientific Education and Research Facilities  
**Location:** Mangilao, Guam  
**Owner:** UNIVERSITY OF GUAM  
**Sheet Title:** SITE ELECTRICAL PLAN SECTION A & B - NURSING BUILDING ANNEX

NO	DESCRIPTION	DATE

DATE : 2023.02.15  
 PROJECT NO: 214040  
 DRAWN BY : JCT/JRL  
 CHECKED BY: WAW  
 COPYRIGHT : © 2022 RIM Architects





## BID/PERMIT SET

PROJECT TITLE: **School of Health Nursing Annex**  
 EDA Project No. 07 79 07557 UOG Scientific Education and Research Facilities  
 Mangilao, Guam

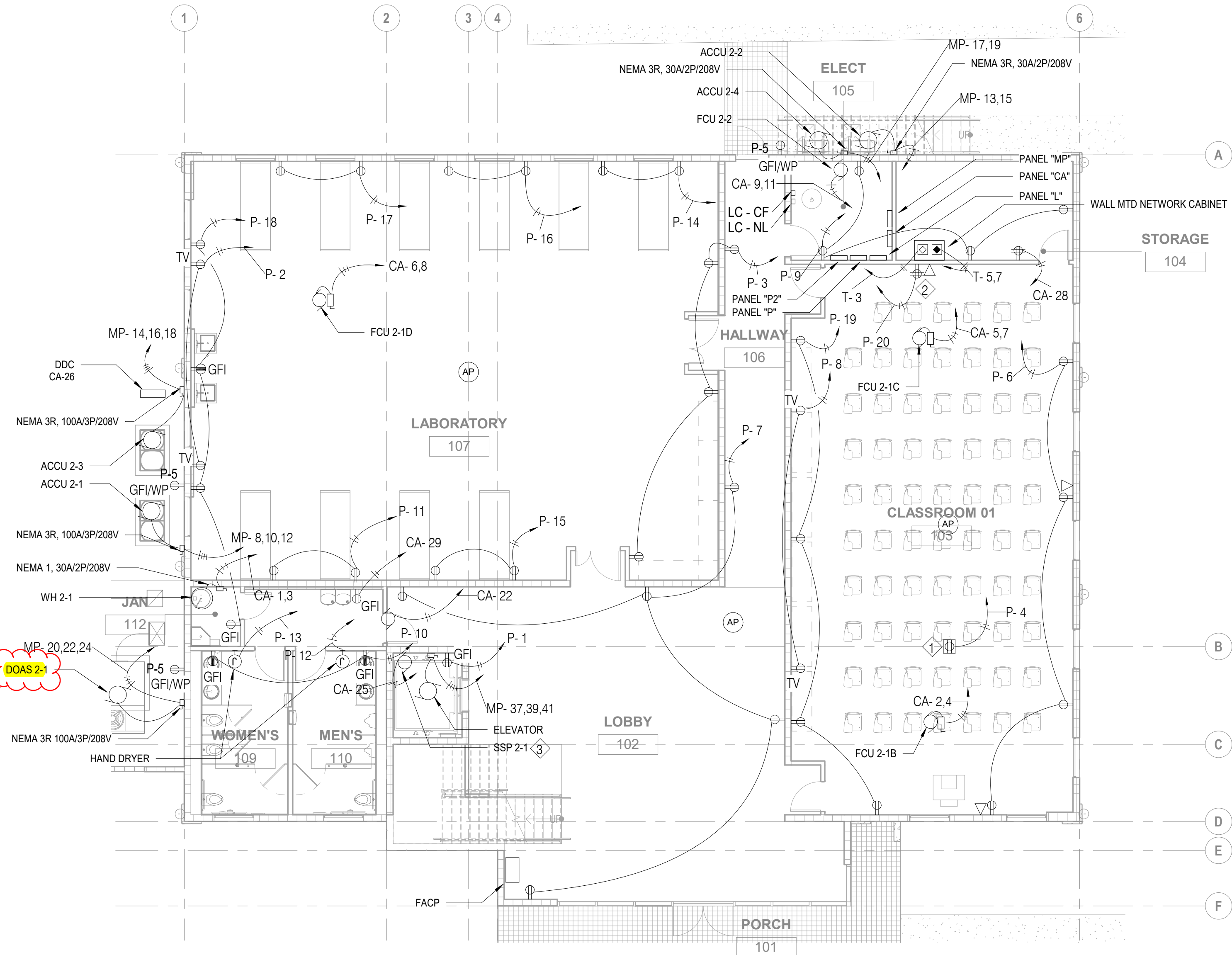
OWNER: UNIVERSITY OF GUAM

SHEET TITLE: **FIRST FLOOR POWER PLAN**


NO	DESCRIPTION	DATE

DWG NO:

# 2EP101



Confirm if this is DOAS 2-3 as indicated on the Schedule of Loads for Panel "MP"

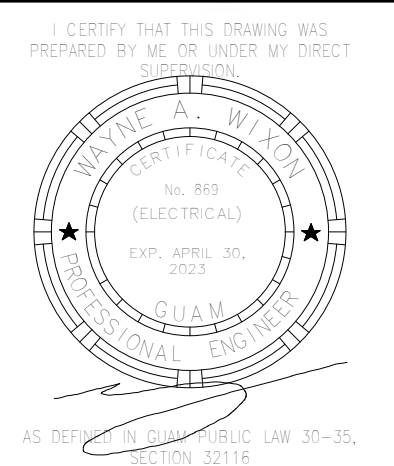
DOAS 2-1

NOTES:

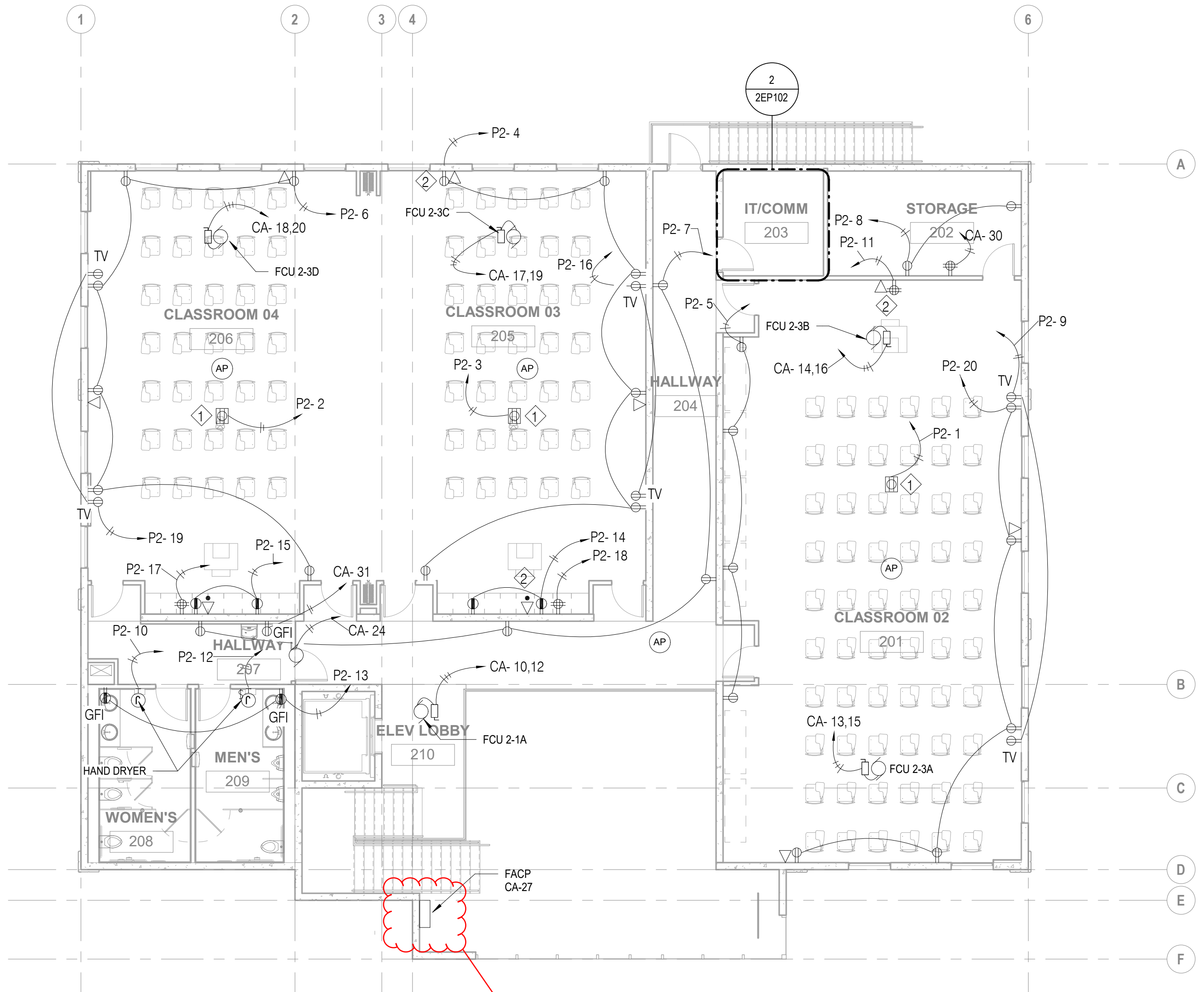
- ① PROJECTOR
- ② COMPUTER STATION
- ③ SEE MECHANICAL FOR ELEVATOR SUMP PUMP CONTROL SYSTEM FOR ALARM MONITORING AND DETECTION.

**1 FIRST FLOOR POWER PLAN**  
2EP101 1/8" = 1'-0"





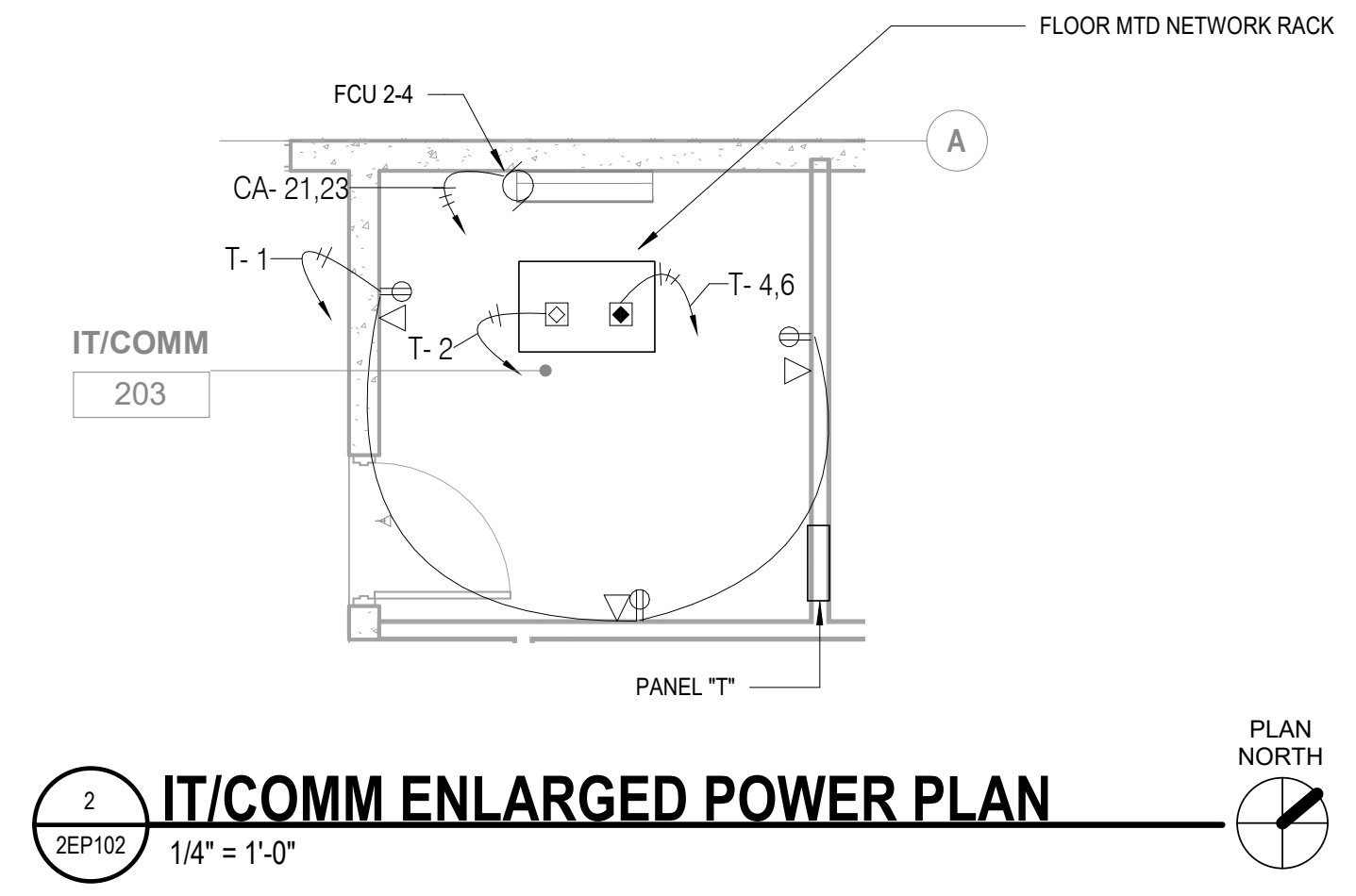
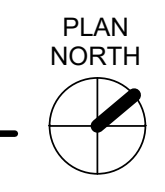
**BID/PERMIT SET**



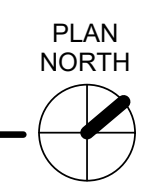
- NOTES:
- ① PROJECTOR
  - ② COMPUTER STATION

Please confirm if this will be provided by GC. Kindly provide the dimension / specifications if not.

**1 SECOND FLOOR POWER PLAN**  
2EP102 1/8" = 1'-0"



**2 IT/COMM ENLARGED POWER PLAN**  
2EP102 1/4" = 1'-0"



PROJECT TITLE: **School of Health Nursing Annex**  
EDA Project No. 07 79 07557 UOG Scientific Education and Research Facilities  
Mangilao, Guam

OWNER: UNIVERSITY OF GUAM

SHEET TITLE: **SECOND FLOOR POWER PLAN**

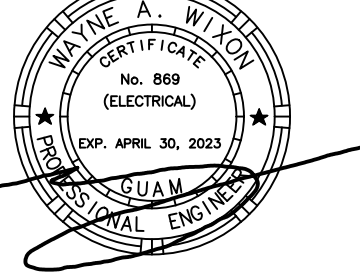
NO	DESCRIPTION	DATE

NO	DESCRIPTION	DATE
DATE	:	2023.02.15
PROJECT NO:	:	214040
DRAWN BY:	:	JT/JR
CHECKED BY:	:	WW
COPYRIGHT :© 2022 RIM Architects		

DWG NO:  
**2EP102**



I CERTIFY THAT THIS DRAWING WAS PREPARED BY ME OR UNDER MY DIRECT SUPERVISION.



AS DEFINED IN GUAM PUBLIC LAW 30-35, SECTION 32116

## BID/PERMIT SET

### School of Health - Nursing Annex

EDA Project No. 07 79 07657 UOG Scientific Education and Research Facilities

Mangilao, Guam

UNIVERSITY OF GUAM

DIAGRAMS

PROJECT TITLE:

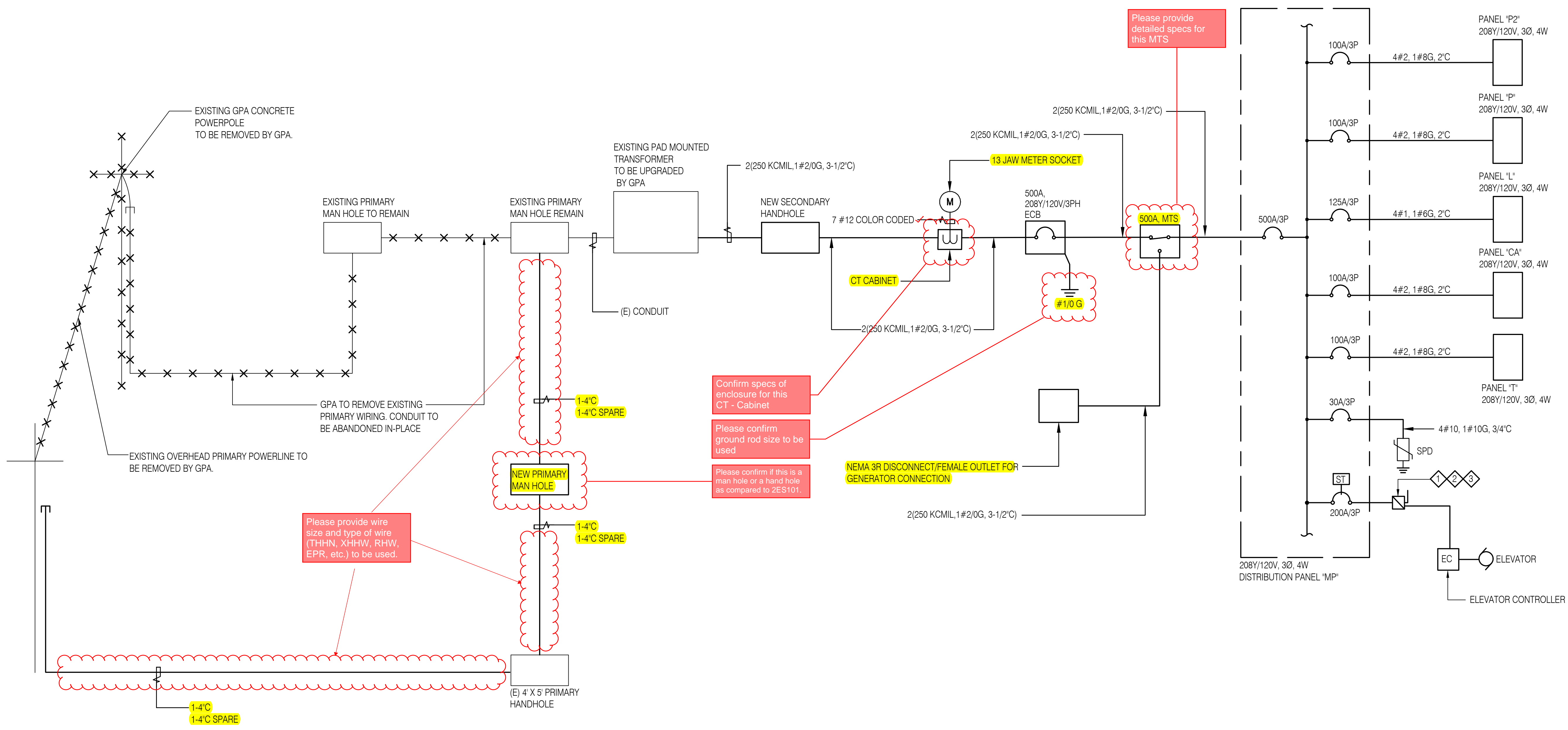
OWNER:

SHEET TITLE:


NO	DESCRIPTION	DATE

DWG NO:

# 2E601



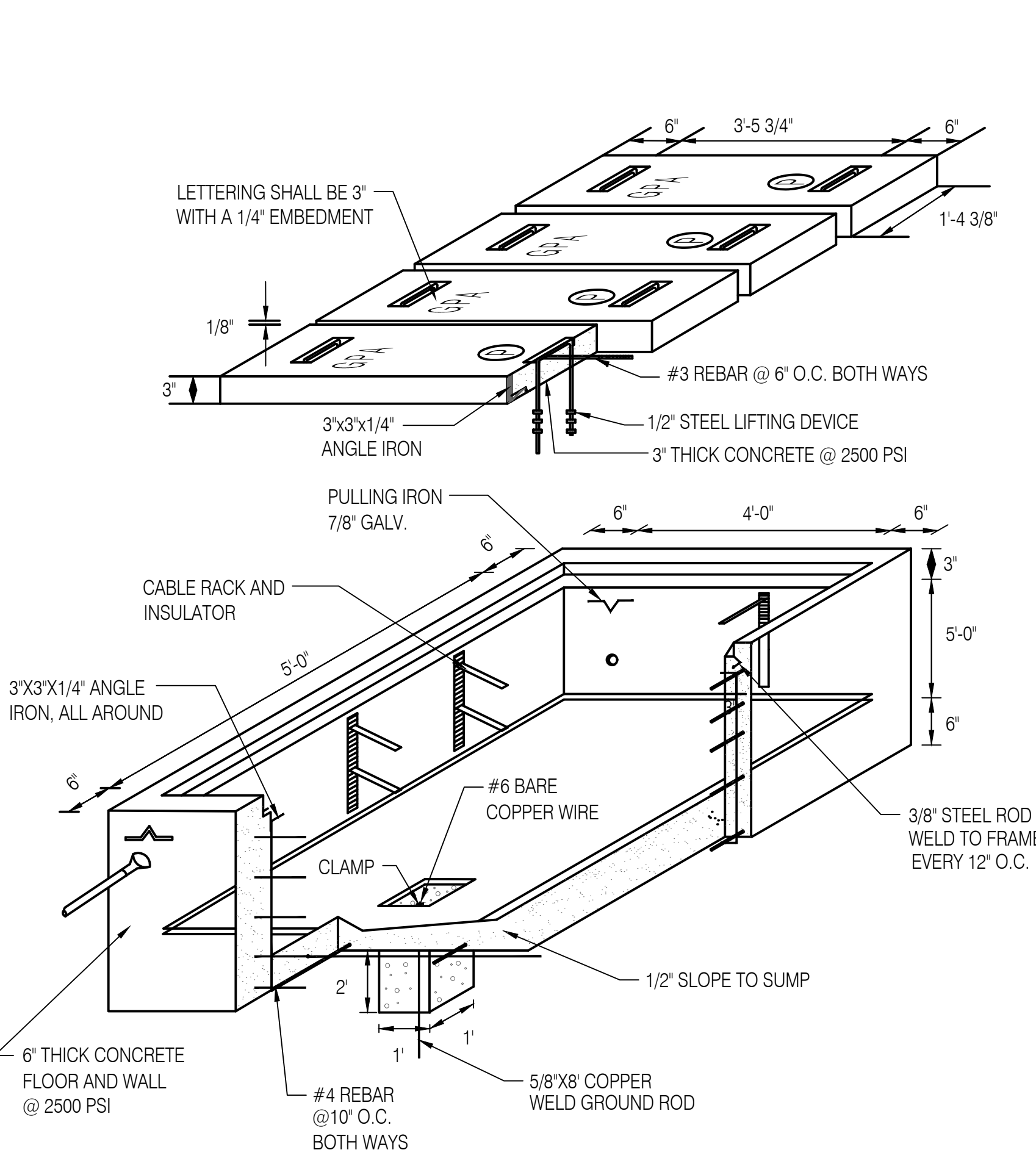
- NOTES:
- 1 THE ELEVATOR CONTROLLER MARKED SCCR TO BE EQUAL TO OR GREATER THAN THE CALCULATED AND MARKED AVAILABLE SHORT-CIRCUIT (FAULT) CURRENT AT THE ELEVATOR CONTROLLER.
  - 2 DISCONNECTING MEANS SHALL BE LOCATED WHERE IT IS READILY ACCESSIBLE TO QUALIFIED PERSONS.
  - 3 FUSIBLE DISCONNECT

## 1 ONE-LINE DIAGRAM

NTS

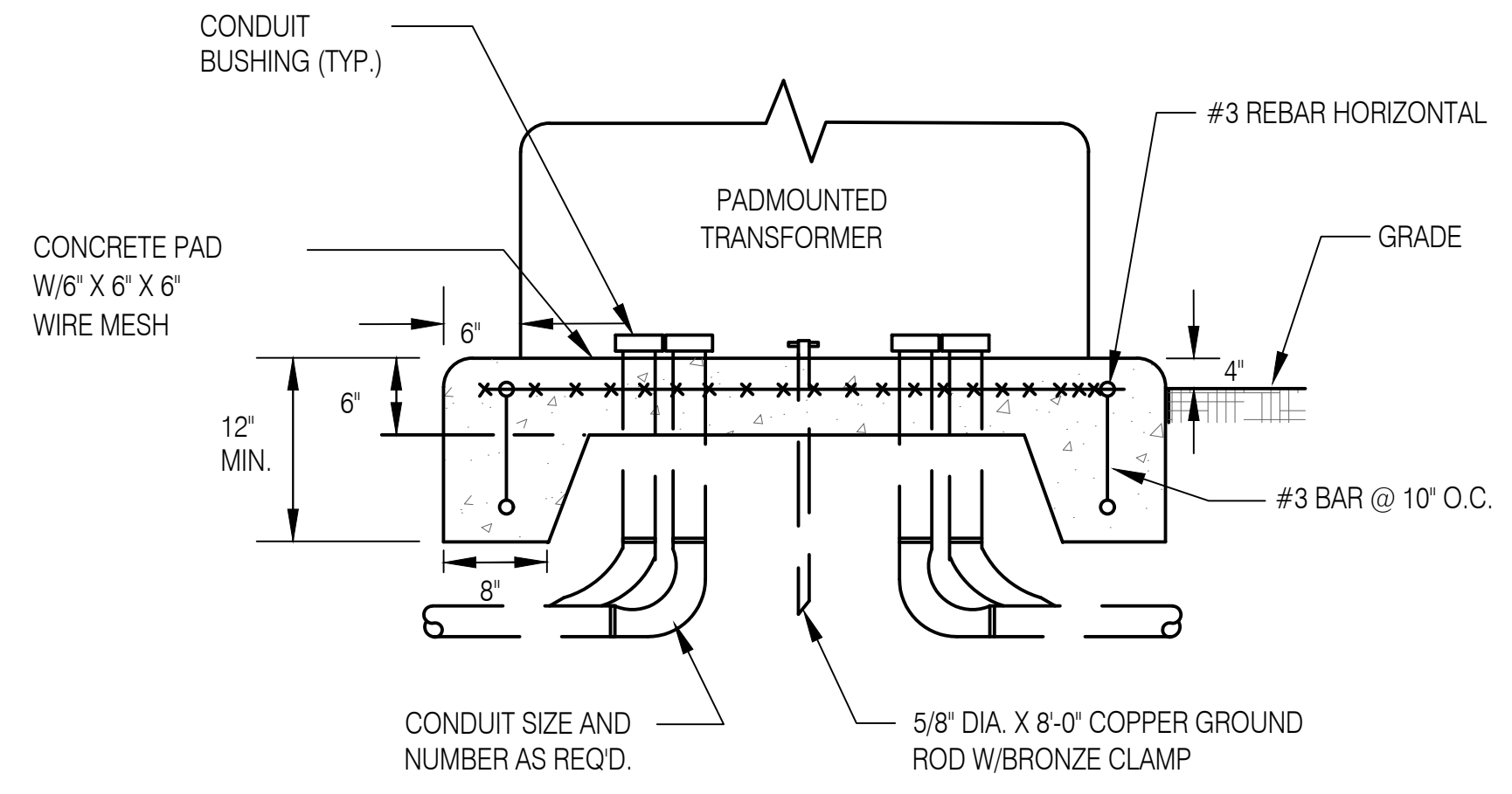



NO	DESCRIPTION	DATE
DATE :	2023.02.15	
PROJECT NO. :	214040	
DRAWN BY :	JCT/JRL	
CHECKED BY :	WAW	
COPYRIGHT : © 2022 RIM Architects		

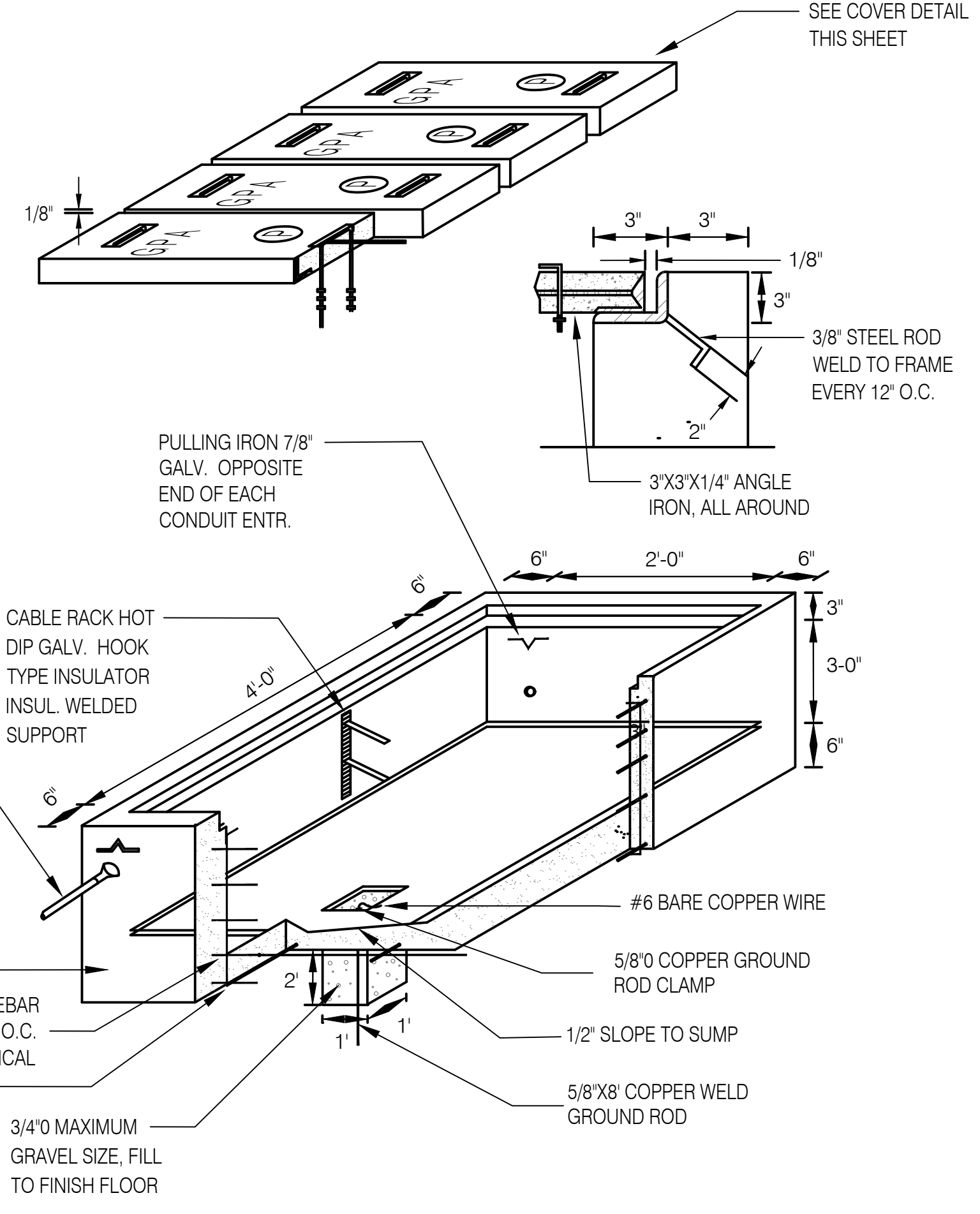


- NOTES:
- GROUND ALL HARDWARE IN HANDHOLE.
  - TOP OF THE HANDHOLE SHOULD BE FLUSH WITH THE SIDEWALK SURFACE, OTHERWISE ALLOW A 2" CLEARANCE FROM REGULAR GROUND SURFACE.
  - AREA OF CONDUIT ENTRANCE SHOULD BE 28" MINIMUM FROM THE FLOOR SLAB, 12" MINIMUM FROM THE LEFT OR RIGHT SIDEWALL AND 20" FROM TOP OF THE HANDHOLE.

**1 5'X4'X4' HANDHOLE DETAIL**  
E501 NTS

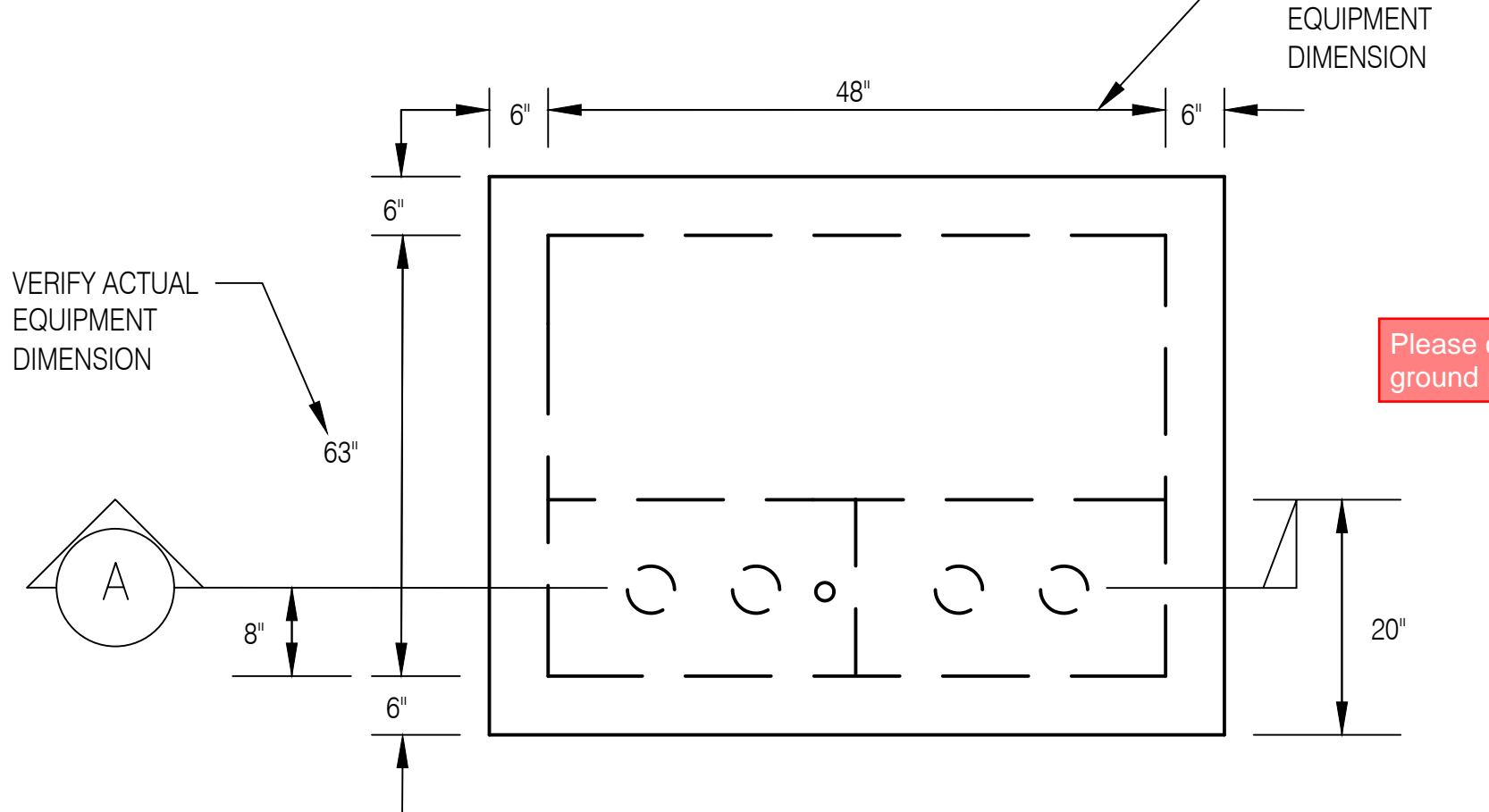


**3 PAD MOUNTED TRANSFORMER DETAIL**  
E501 NTS

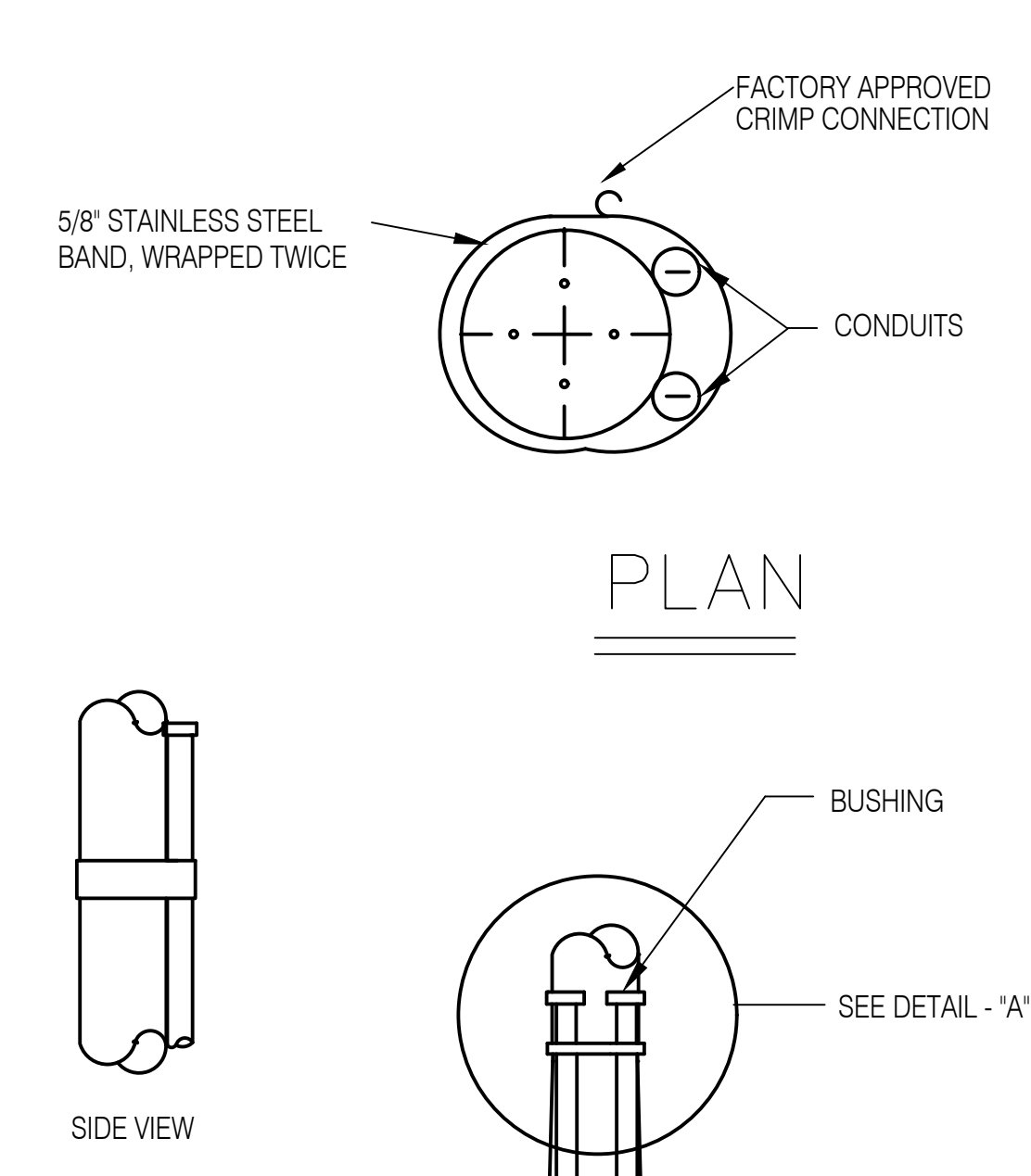


- NOTES:
- GROUND ALL HARDWARE IN HANDHOLE.
  - TOP OF THE HANDHOLE SHOULD BE FLUSH WITH THE SIDEWALK SURFACE, OTHERWISE ALLOW A 2" CLEARANCE FROM REGULAR GROUND SURFACE.
  - AREA OF CONDUIT ENTRANCE SHOULD BE 6" MINIMUM FROM THE FLOOR SLAB, 10" MINIMUM FROM THE LEFT OR RIGHT SIDEWALL AND 12" FROM TOP OF THE HANDHOLE.

**2 2'X4' HANDHOLE DETAIL**  
E501 NTS



**PLAN**



**DETAIL-"A"**

**FRONT ELEV.**

- UNDERGROUND CONDUIT BANK, SIZE AND QUANTITY AS REQUIRED.
- THE CONDUIT RISER SHALL BE APPROXIMATELY 30' UP THE POLE SIZE OF CONDUIT AND CONDUIT ACCESSORIES TO BE AS SHOWN.
- THE RIGID CONDUIT SHALL BE GROUNDED AND CONNECTED TO THE GROUND ROD.
- THE RISER CONDUIT SHALL BE PROVIDED WITH PULL WIRE OR NYLON ROPE OF 200 LBS. PULL STRENGTH AND THE CONDUIT END SHALL BE CAPPED.

**4 POLE RISER DETAIL**  
E501 NTS

CU GROUND ROD

Please confirm ground rod size

SECTION 08 35 13

ACCORDION FOLDING DOORS

PART 1 - GENERAL

1.1 RELATED DOCUMENTS

- A. Drawings and general provisions of the Contract, including General and Supplementary Conditions and Division 01 Specification Sections, apply to this Section.

1.2 SUMMARY

- A. Section Includes:
  - 1. Furnish and install accordion folding partitions as indicated in drawings.

1.3 RELATED SECTIONS

- A. Division 05 Sections for primary structural support, including pre-punching of support members by structural steel supplier per partition supplier's template.

1.4 ACTION SUBMITTALS

- A. Product Data: For each type of product.
  - 1. Material descriptions, construction details, finishes, installation details, and operating instructions for each type of partition, component, and accessory specified Sustainable Design Submittals:
- B. Shop Drawings:
  - 1. Show location and extent of partitions. Include plans, elevations, sections, details, attachments to other construction, and accessories. Indicate dimensions, weights, conditions at openings, and at storage areas, and required installation, storage, and operating clearances. Indicate location and installation requirements for hardware and track, including floor tolerances required and direction of travel. Indicate blocking to be provided by others.
- C. Setting Drawings:
  - 1. Show imbedded items and cutouts required in other work, including support beam punching template.
- D. Samples:

1. Color samples demonstrating full range of finishes available by architect. Verification samples will be available in same thickness and material indicated for the work.
- E. Furnish materials that generate the least amount of pollution.
  1. Furnish products and materials that have third party verified environmental product declarations (EPD's). Consider products and materials that have optimized environmental performance (reduced life cycle impacts). Products without an EPD or other disclosure documentation are not acceptable.
- F. Buy American:
  1. Folding door to be manufactured in the United States in compliance with applicable U.S. Federal Trade Commission (FTC) and U.S. Customs Service and Border Protections regulations and be labeled "Made in America".

#### 1.5 QUALITY ASSURANCE

- A. Installer Qualifications: An experienced installer who is certified in writing by the partition manufacturer, as qualified to install the manufacturer's partition systems for work similar in material, design, and extent to that indicated for this Project.
- B. Preparation of the opening shall conform to the dimensions specified, plumb, level, and in accordance to building practices.
- C. Acoustical Performance: Test partitions in an independent acoustical laboratory in accordance with ASTM E90 test procedure and classified in accordance with ASTM E413 to attain no less than the STC rating specified. Provide a complete and unedited written test report by the testing laboratory upon request.
- D. The folding partition must be manufactured by a certified ISO-9001-2015 company or an equivalent quality control system.

#### 1.6 REFERENCE STANDARDS

- A. ASTM International
  1. ASTM E557 Standard Practice for Architectural Application and Installation of Operable Partitions
  2. ASTM E90 - Standard Test Method for Laboratory Measurement of Airborne Sound Transmission Loss of Building Partitions and Elements
  3. ASTM E84 - Surface Burning Characteristics of Building Materials
  4. ASTM E413 - Classification for Rating Sound Insulation
- B. International Standards Organization
  1. ISO 14021 - Environmental Labels and Declarations - Self-Declared Environmental Claims (Type II Environmental Labeling).

2. ISO 14025:2011-10, Environmental Labels and Declarations - Type III Environmental Declarations - Principles and Procedures.
3. ISO 14040:2009-11, Environmental Management - Life Cycle Assessment - Principles and Framework.
4. ISO 14044:2006-10, Environmental Management - Life Cycle Assessment - Requirements and Guidelines.
5. ISO 21930 – Sustainability in Buildings and Civil Engineering Works — Core Rules for Environmental Product Declarations of Construction Products and Services.

#### 1.7 DELIVERY, STORAGE, AND HANDLING

- A. Clearly mark packages and partitions with numbering systems used on Shop Drawings. Do not use permanent markings on partitions.
- B. Protect partitions during delivery, storage, and handling to comply with manufacturer's direction and as required to prevent damage.

#### 1.8 WARRANTY

- A. Provide written warranty by manufacturer of partitions agreeing to repair or replace any components with manufacturing defects.
- B. Warranty period: Two (2) years.

### PART 2 - PRODUCTS

#### 2.1 MANUFACTURERS, PRODUCTS, AND OPERATION

- A. Manufacturers: Subject to compliance with requirements, provide product by the following:
  1. Modernfold, Inc.
- B. Doors to be manufactured in the U.S.A.
- C. Products: Subject to compliance with the requirements, provide the following product:
  1. Soundmaster #8 Accordion Folding Partition.

#### 2.2 OPERATION

- A. Soundmaster #8: Manually operated, top supported, accordion folding.



## 2.3 CONSTRUCTION

- A. Shall consist of steel hinge plates welded to 3/16-inch (5mm) diameter vertical steel rods, with a single row of plates at the bottom and top with intermediate rows at approximately 42-inch (1067mm) on center. Partitions 10'-0" (3048mm) high or over have a double row of hinge plates at the top. A high tensile alloy steel trolley yoke, functioning as a hinge pin at required intervals, supports the frame assembly.
- B. Sound Transmission Class: Laboratory acoustical performance of the folding partition shall have been tested in an independent acoustical laboratory, in accordance with ASTM E90 test procedure, classified in accordance with ASTM E413 and shall have attained an STC rating of no less than:
  - 1. Soundmaster 8 – 39 STC

## 2.4 PARTITION FINISHES

- A. Finish: Face finish shall be (select as required):
  - 1. Reinforced heavy-duty vinyl with woven backing weighing not less than 30 ounces per lineal yard.
  - 2. Acoustical, non-woven needle punch carpet, with fused fibers to prevent unraveling or fray of material.
  - 3. Wall covering and upholstery fabric with surface treatment to resist stains.
  - 4. Customer's own material (subject to factory approval).
- B. Partition Trim: Exposed sweep strips of one consistent color.

## 2.5 SOUND SEALS

- A. Shall be pairs of three-layer flexible sweep strips at top and bottom. Vertical female sound channel shall be polyurethane foam lined.
- B. Sound Insulation: 24-gage, V-grooved steel panels and heavy duty flame resistant acoustical membrane. Each panel attaches to the frame with steel leaf fasteners.
- C. Pairs of Flexible Sweep Strips: Shall be provided at top and bottom of the partition. Air release for air trapped within the folding partition shall be accomplished during operation by a series of 3/8-inch (9.5mm) diameter holes through the lead post molding.

## 2.6 HARDWARE

- A. Grip type hand pulls shall be die-cast zinc, satin chrome finish. Extruded aluminum or plastic hand pulls will not be accepted.

2.7 SUSPENSION SYSTEM

- A. Track and trolley sizes matched to the size of the partition.
  - 1. Suspension Tracks: Shall be of a continuous “C” channel shaped track, connected to the structural support.
  - 2. Carriers: The accordion folding partition shall be suspended from the track by two-wheel intermediate and four-wheel lead trolley assemblies.

PART 3 - EXECUTION

3.1 EXAMINATION

- A. Examine flooring, structural support, and opening, with Installer present, for compliance with requirements for installation tolerances and other conditions affecting performance of partitions. Proceed with installation only after unsatisfactory conditions have been corrected.

3.2 INSTALLATION

- A. General: Comply with partition manufacturer’s written installation instructions, Drawings, and approved Shop Drawings.
- B. Install partitions and accessories after other finishing operations, including painting have been completed.
- C. Defective partitions are not acceptable.

3.3 CLEANING AND PROTECTION

- A. Clean partition surfaces upon completing installation of partitions to remove dust, dirt, adhesives, and other foreign materials according to manufacturer’s written instructions.
- B. Provide final protection and maintain conditions in a manner acceptable to the manufacturer and installer that ensure operable partitions are without damage or deterioration at time of Substantial Completion.

3.4 ADJUSTING

- A. Adjust partitions to operate smoothly, easily, and quietly throughout entire operational range. Lubricate hardware and other moving parts.
- B. Pocket Doors: Adjust to operate smoothly and easily, without binding or warping. Adjust hardware to function smoothly. Confirm that latches and locks engage accurately and securely without forcing or binding.

3.5 DEMONSTRATION

- A. Demonstrate proper operation and maintenance procedures to Owner's representative.
- B. Provide Operation and Maintenance Manual to Owner's representative.

END OF SECTION 08 35 13



**FUTURE  
WORLD  
CORPORATION** General Contractor

P.O. Box 12554 Tamuning, Guam 96931 • Telephone: 1(671) 649-4147/48/49 • Facsimile: 1(671) 649-4158  
e-mail: futureworld@guam.net • website: www.futureworldcorp.net

**REQUEST FOR INFORMATION**

<b>PROJECT: UOG IFB-23-01</b>	<b>RFI NO.</b>	<b>1</b>
-------------------------------	----------------	----------

Subject: <b>RFI for the list of Item</b>	Date: <b>June 29, 2023</b>
To: <b>UOG Procurement</b>	From: <b>Arnold Felizardo</b>
Company:	Company: <b>Future World Corporation</b>
Contact No.:	Contact No.: <b>998-1008</b>

We are sending you attached via:  e-mail  hand carry

Specification Reference	Plan Reference	Discipline
Item	Description	
1	Please see attached 5-page Electrical plan of Nursing Annex Building with our query.	
2	Kindly provide us specification for Accordion Doors	
3	According to our supplier, Armstrong Medintech, Resilient Sheet for Nursing and WERI, is discontinued, and our vendor is offering us Mature Advantage by Toli which is well suited for HealthCare Facilities because it has Anti-Viral Coating	

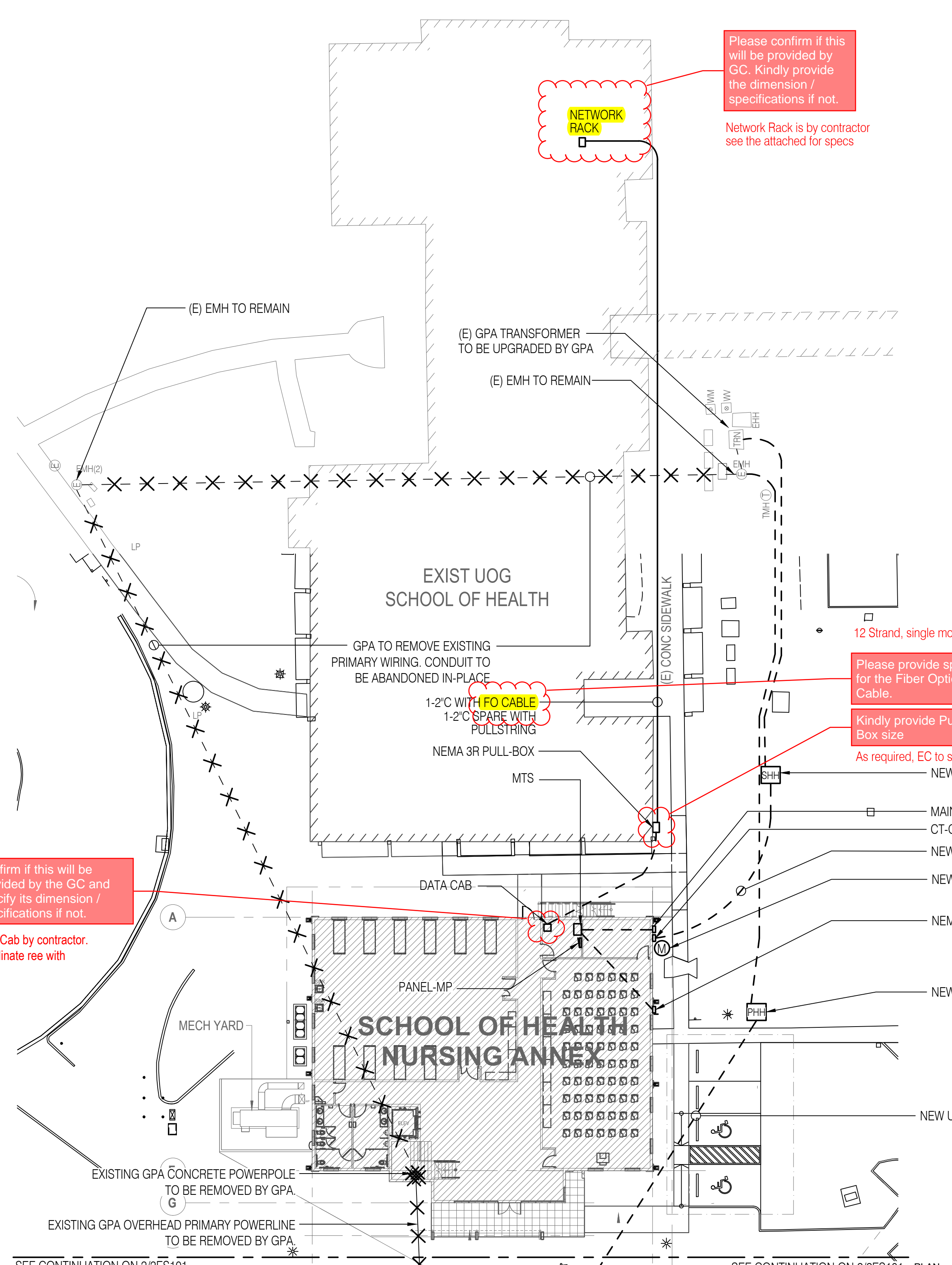
**A & E Response:**

Received By: _____	Submitted By: 
Representative	Arnold Felizardo / Proj. Engineer

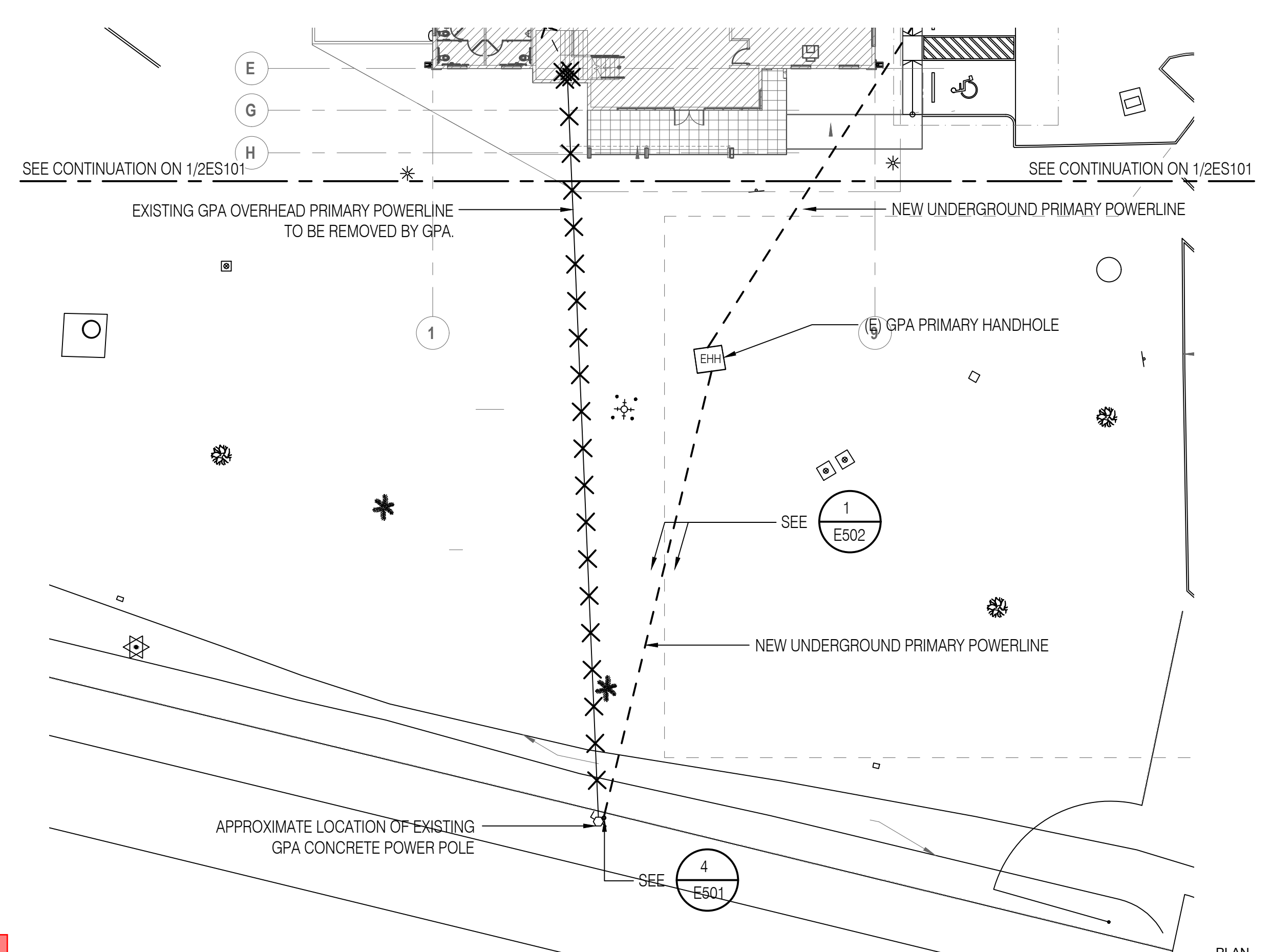
Physical Address: 954 Army Drive, Barrigada Heights, Guam 96913 Telephone: 671-649-4147  
Mailing Address: P.O. Box 12554, Tamuning, Guam 96931  
Website: www.futureworldguam.com



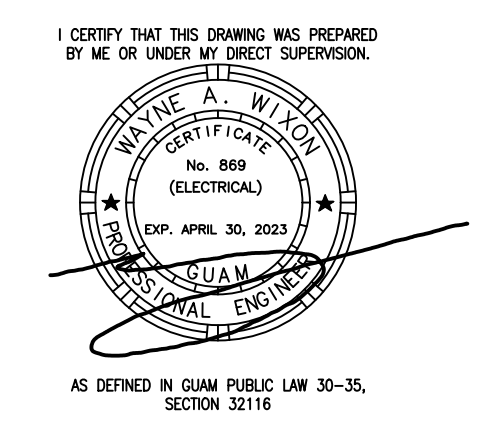
# ITEM 1



1 SITE ELECTRICAL PLAN SECTION A - NURSING BUILDING ANNEX  
 2ES101 1" = 20'-0"  
 0" 10' 20' 40' PLAN NORTH



2 SITE ELECTRICAL PLAN SECTION B - NURSING BUILDING ANNEX  
 2ES101 1" = 20'-0"  
 0" 10' 20' 40' PLAN NORTH



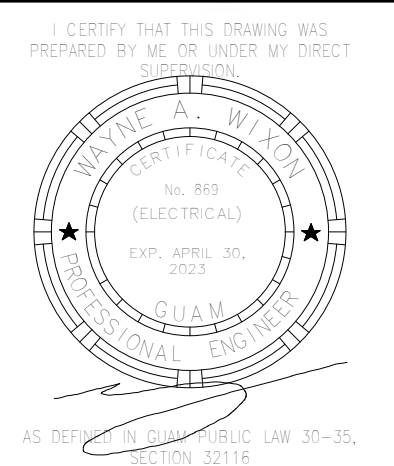
## BID/PERMIT SET

**School of Health - Nursing Annex**  
 EDA Project No. 07 79 07657 UOG Scientific Education and Research Facilities  
 Mangilao, Guam  
 UNIVERSITY OF GUAM  
**SITE ELECTRICAL PLAN SECTION A & B**  
**- NURSING BUILDING ANNEX**

PROJECT TITLE:  
 OWNER:  
 SHEET TITLE:


NO	DESCRIPTION	DATE

DWG NO:  
**2ES101**



## BID/PERMIT SET

PROJECT TITLE: **School of Health Nursing Annex**  
 EDA Project No. 07 79 07557 UOG Scientific Education and Research Facilities  
 Mangilao, Guam

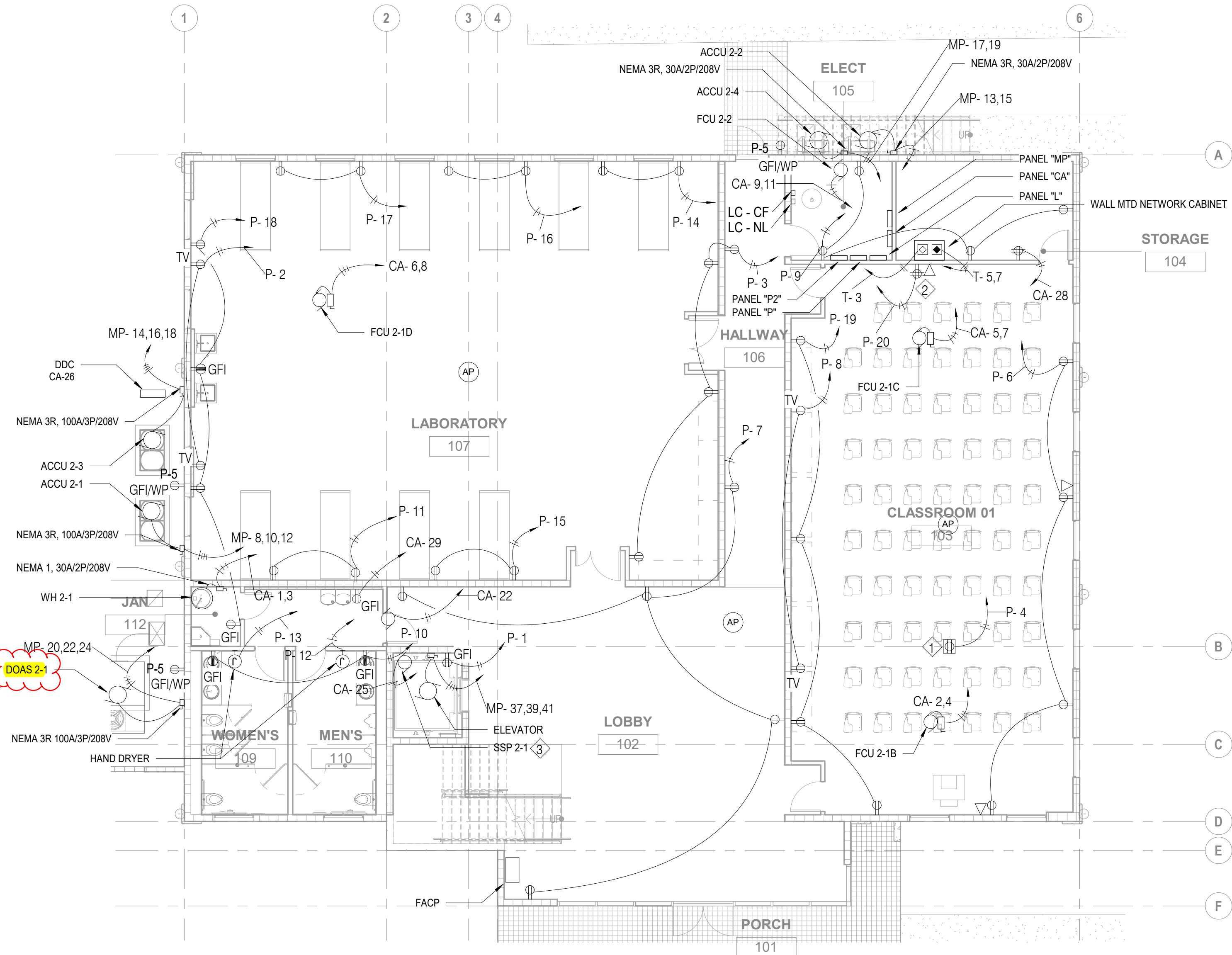
OWNER: UNIVERSITY OF GUAM

SHEET TITLE: **FIRST FLOOR POWER PLAN**

NO	DESCRIPTION	DATE

NO	DESCRIPTION	DATE
DATE	:	2023.02.15
PROJECT NO:	:	214040
DRAWN BY :	:	JT/JR
CHECKED BY:	:	WW
COPYRIGHT :© 2022 RIM Architects		

DWG NO:  
**2EP101**



Confirm if this is DOAS 2-3 as indicated on the Schedule of Loads for Panel "MP"  
 Per Mechanical plans, DOAS 2-1 is correct

- NOTES:
- ① PROJECTOR
  - ② COMPUTER STATION
  - ③ SEE MECHANICAL FOR ELEVATOR SUMP PUMP CONTROL SYSTEM FOR ALARM MONITORING AND DETECTION.

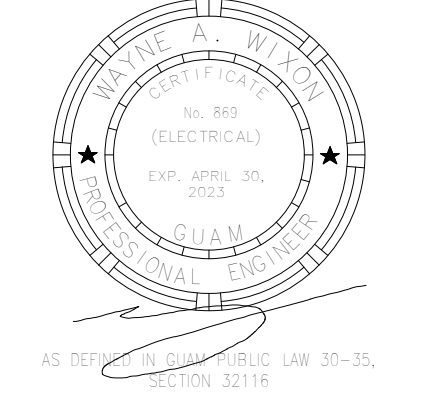
**1 FIRST FLOOR POWER PLAN**  
 2EP101 1/8" = 1'-0"







I CERTIFY THAT THIS DRAWING WAS PREPARED BY ME OR UNDER MY DIRECT



**BID/PERMIT SET**

PROJECT TITLE: **School of Health Nursing Annex**  
EDA Project No. 07 79 07557 UOG Scientific Education and Research Facilities  
Mangilao, Guam

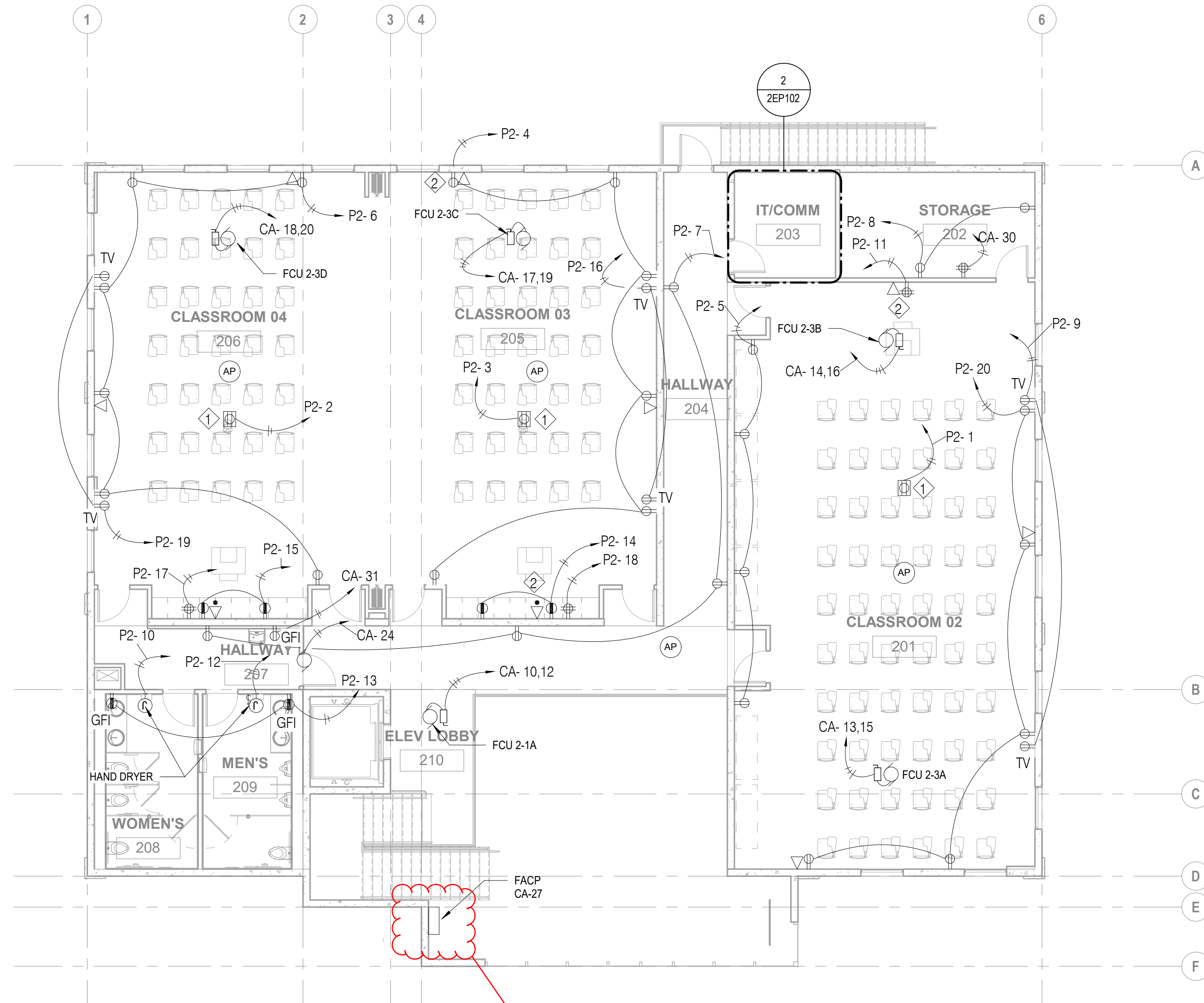
OWNER: UNIVERSITY OF GUAM

SHEET TITLE: **SECOND FLOOR POWER PLAN**


NO	DESCRIPTION	DATE
DATE :	2023.02.15	
PROJECT NO:	214040	
DRAWN BY :	JT/JR	
CHECKED BY:	WW	
COPYRIGHT :© 2022 RIM Architects		

DWG NO:

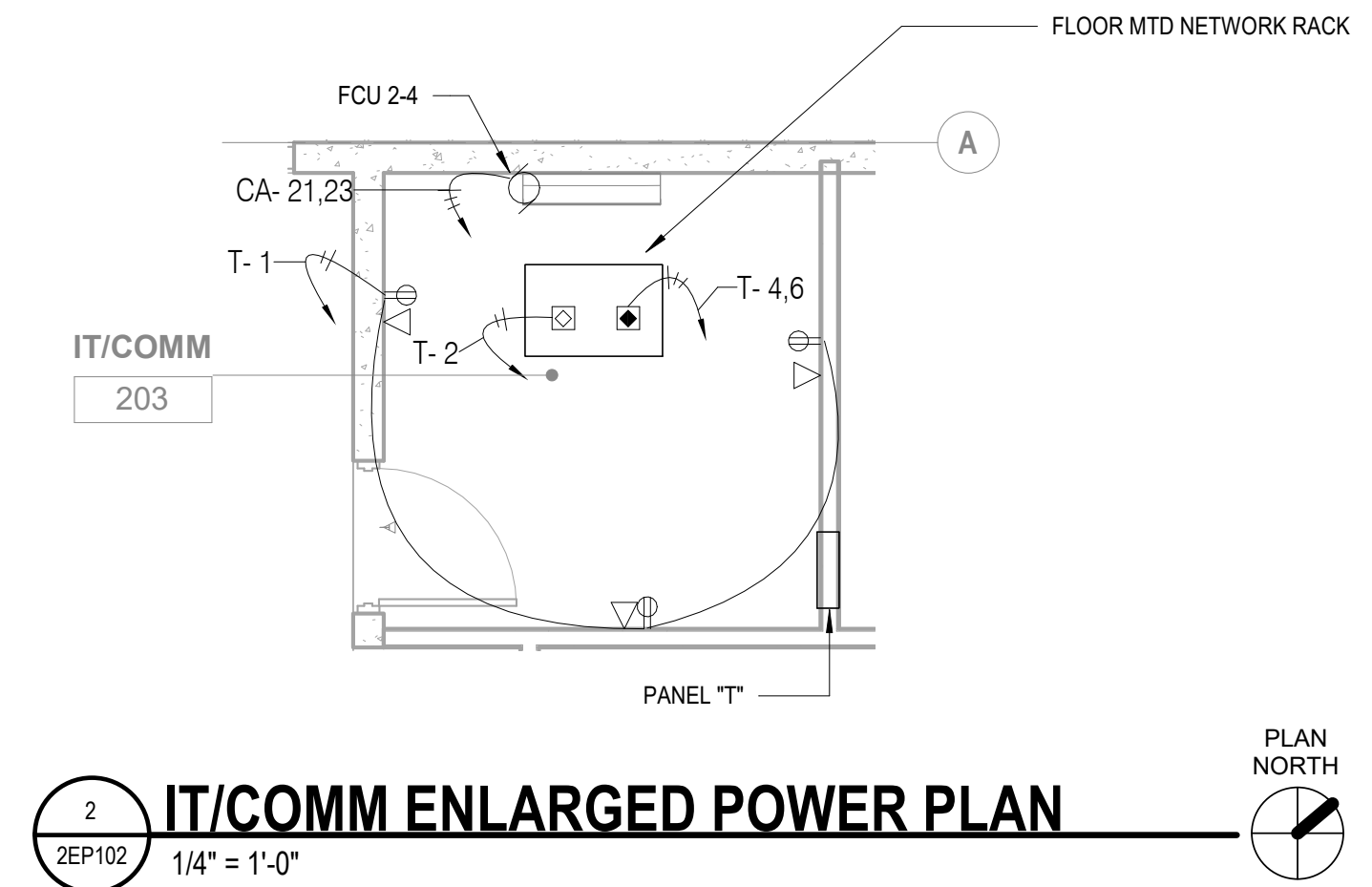
## 2EP102



- NOTES:
- ① PROJECTOR
  - ② COMPUTER STATION

Please confirm if this will be provided by GC. Kindly provide the dimension / specifications if not.  
\*FACP is part of the bid package, see specifications

**1 SECOND FLOOR POWER PLAN**  
2EP102 1/8" = 1'-0"

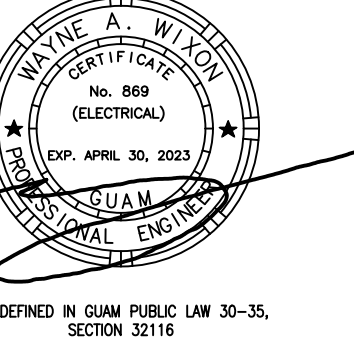


**2 IT/COMM ENLARGED POWER PLAN**  
2EP102 1/4" = 1'-0"





I CERTIFY THAT THIS DRAWING WAS PREPARED BY ME OR UNDER MY DIRECT SUPERVISION.



## BID/PERMIT SET

### School of Health - Nursing Annex

EDA Project No. 07 79 07657 UOG Scientific Education and Research Facilities

Mangilao, Guam

UNIVERSITY OF GUAM

DIAGRAMS

PROJECT TITLE:

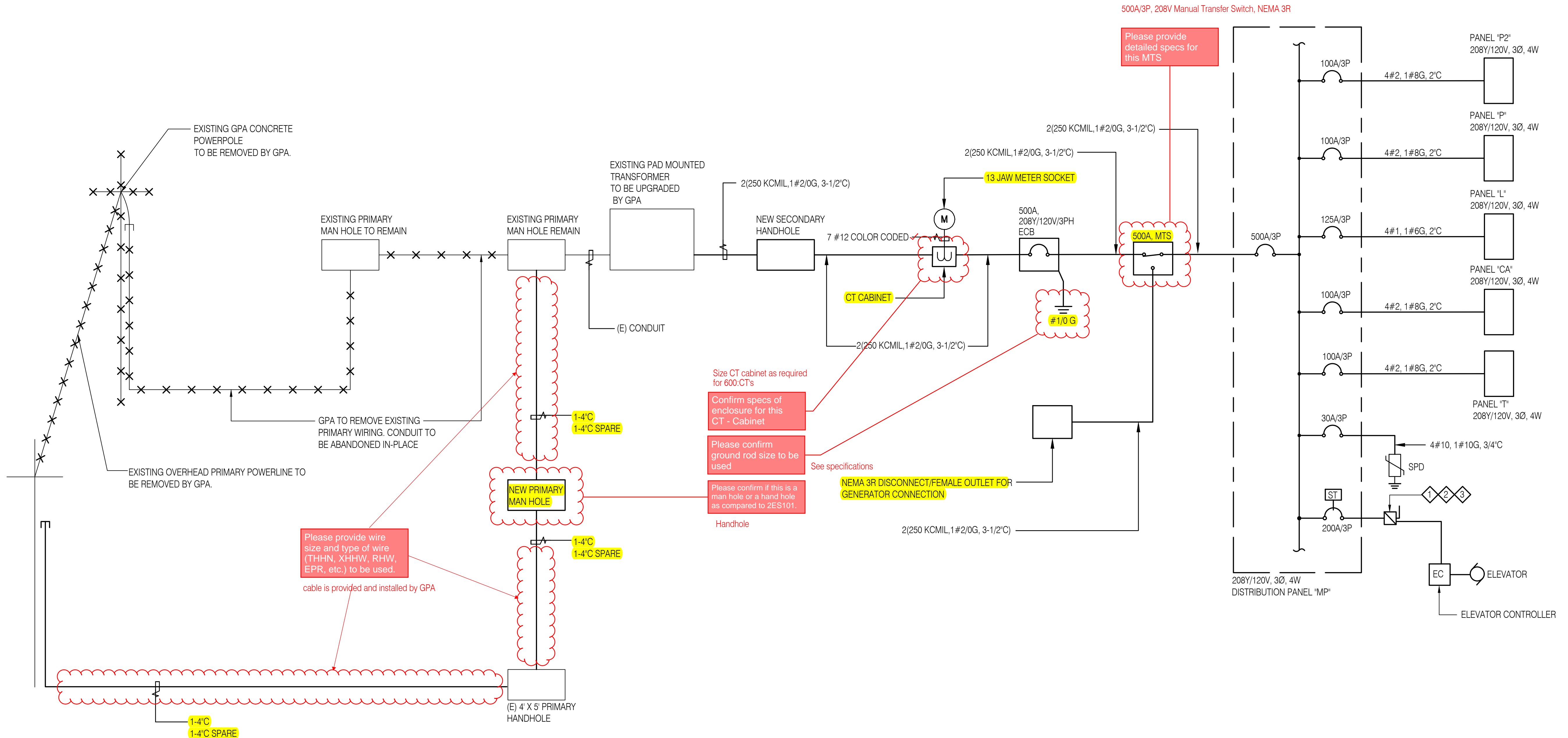
OWNER:

SHEET TITLE:


NO	DESCRIPTION	DATE

DWG NO:

# 2E601



500A/3P, 208V Manual Transfer Switch, NEMA 3R

Please provide detailed specs for this MTS

Size CT cabinet as required for 600:CTs

Confirm specs of enclosure for this CT - Cabinet

Please confirm ground rod size to be used

Please confirm if this is a man hole or a hand hole as compared to 2ES101.

Handhole

NEMA 3R DISCONNECT/FEMALE OUTLET FOR GENERATOR CONNECTION

Please provide wire size and type of wire (THHN, XHHW, RHW, EPR, etc.) to be used.

cable is provided and installed by GPA

**NOTES:**

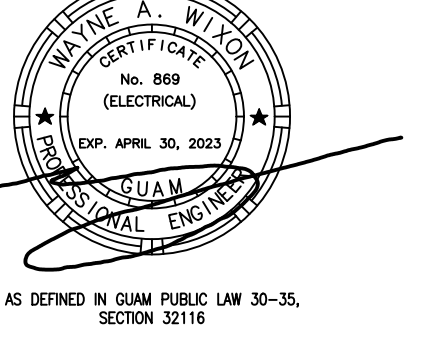
- ① THE ELEVATOR CONTROLLER MARKED SCCR TO BE EQUAL TO OR GREATER THAN THE CALCULATED AND MARKED AVAILABLE SHORT-CIRCUIT (FAULT) CURRENT AT THE ELEVATOR CONTROLLER.
- ② DISCONNECTING MEANS SHALL BE LOCATED WHERE IT IS READILY ACCESSIBLE TO QUALIFIED PERSONS.
- ③ FUSIBLE DISCONNECT

**1 ONE-LINE DIAGRAM**  
NTS





I CERTIFY THAT THIS DRAWING WAS PREPARED BY ME OR UNDER MY DIRECT SUPERVISION.



AS DEFINED IN GUAM PUBLIC LAW 30-35, SECTION 32116

## BID/PERMIT SET

**School of Health - Nursing Annex**  
EDA Project No. 07 79 07657 UOG Scientific Education and Research Facilities  
Mangilao, Guam

UNIVERSITY OF GUAM

DETAILS

PROJECT TITLE:

OWNER:

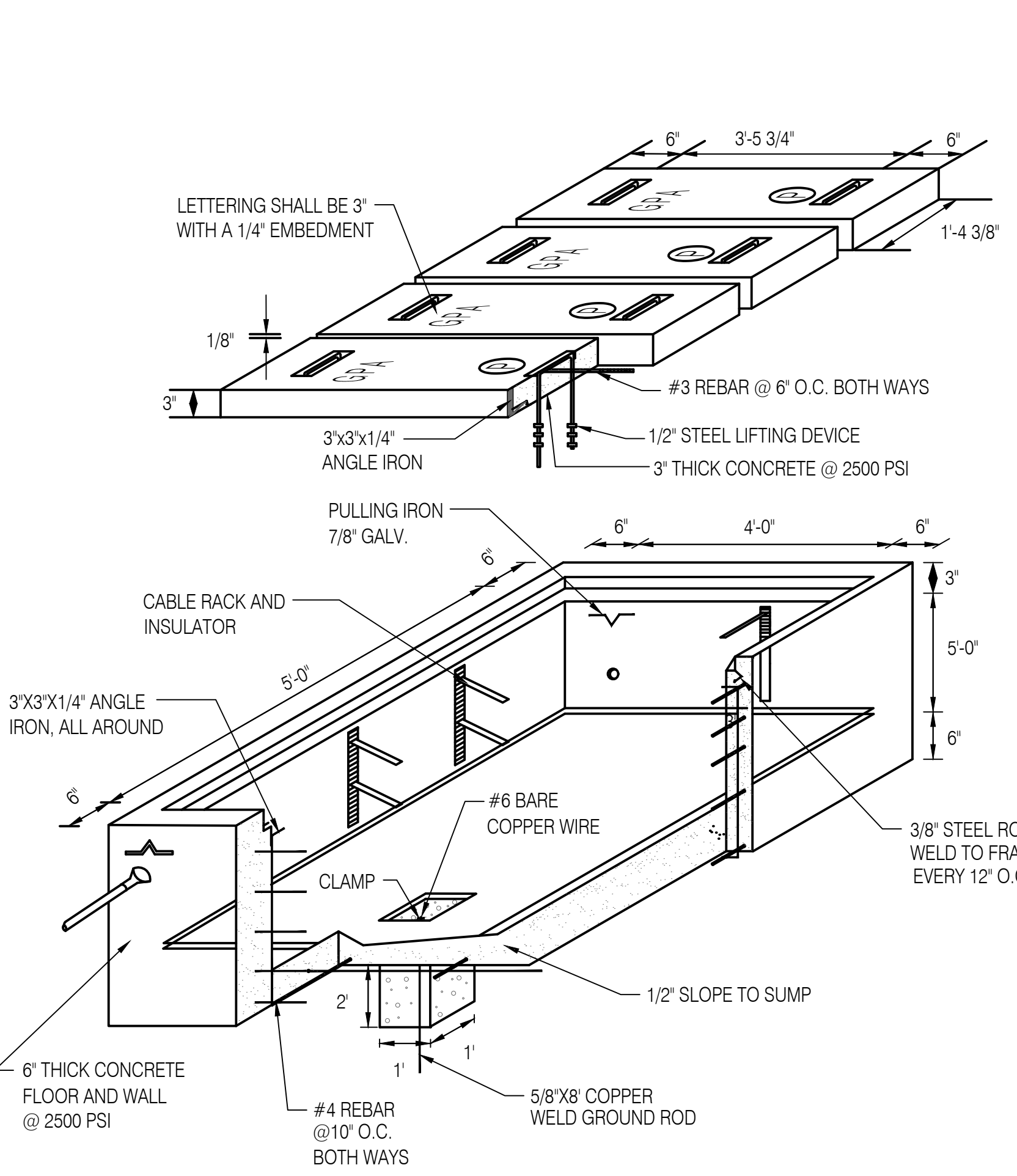
SHEET TITLE:

NO	DESCRIPTION	DATE

NO	DESCRIPTION	DATE
DATE	:	2023.02.15
PROJECT NO:	:	214040
DRAWN BY	:	JCT/JRL
CHECKED BY	:	WAW
COPYRIGHT	:	© 2022 RIM Architects

DWG NO:

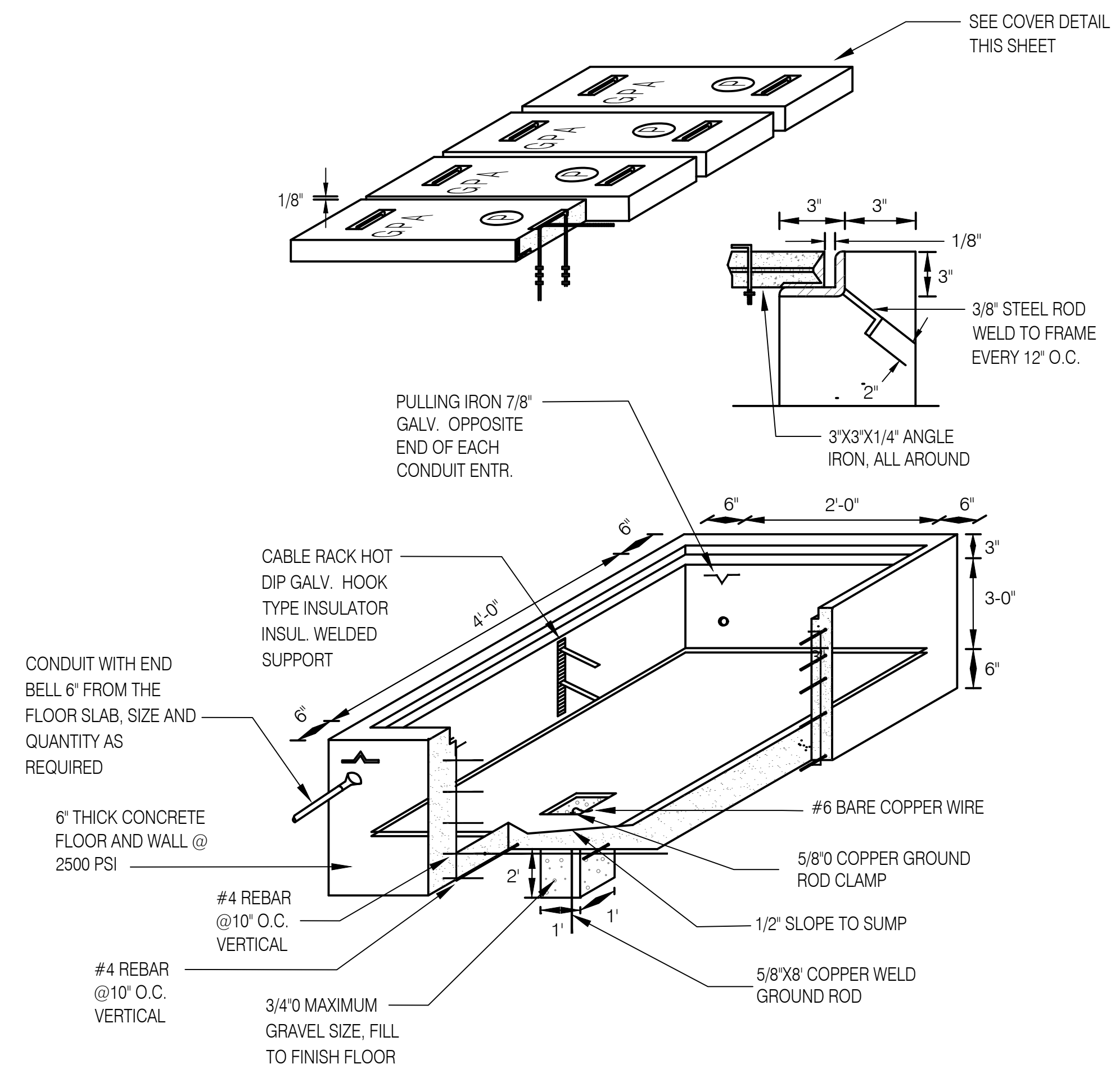
# E501



NOTES:

- GROUND ALL HARDWARE IN HANDHOLE.
- TOP OF THE HANDHOLE SHOULD BE FLUSH WITH THE SIDEWALK SURFACE, OTHERWISE ALLOW A 2" CLEARANCE FROM REGULAR GROUND SURFACE.
- AREA OF CONDUIT ENTRANCE SHOULD BE 28" MINIMUM FROM THE FLOOR SLAB, 12" MINIMUM FROM THE LEFT OR RIGHT SIDEWALL AND 20" FROM TOP OF THE HANDHOLE.

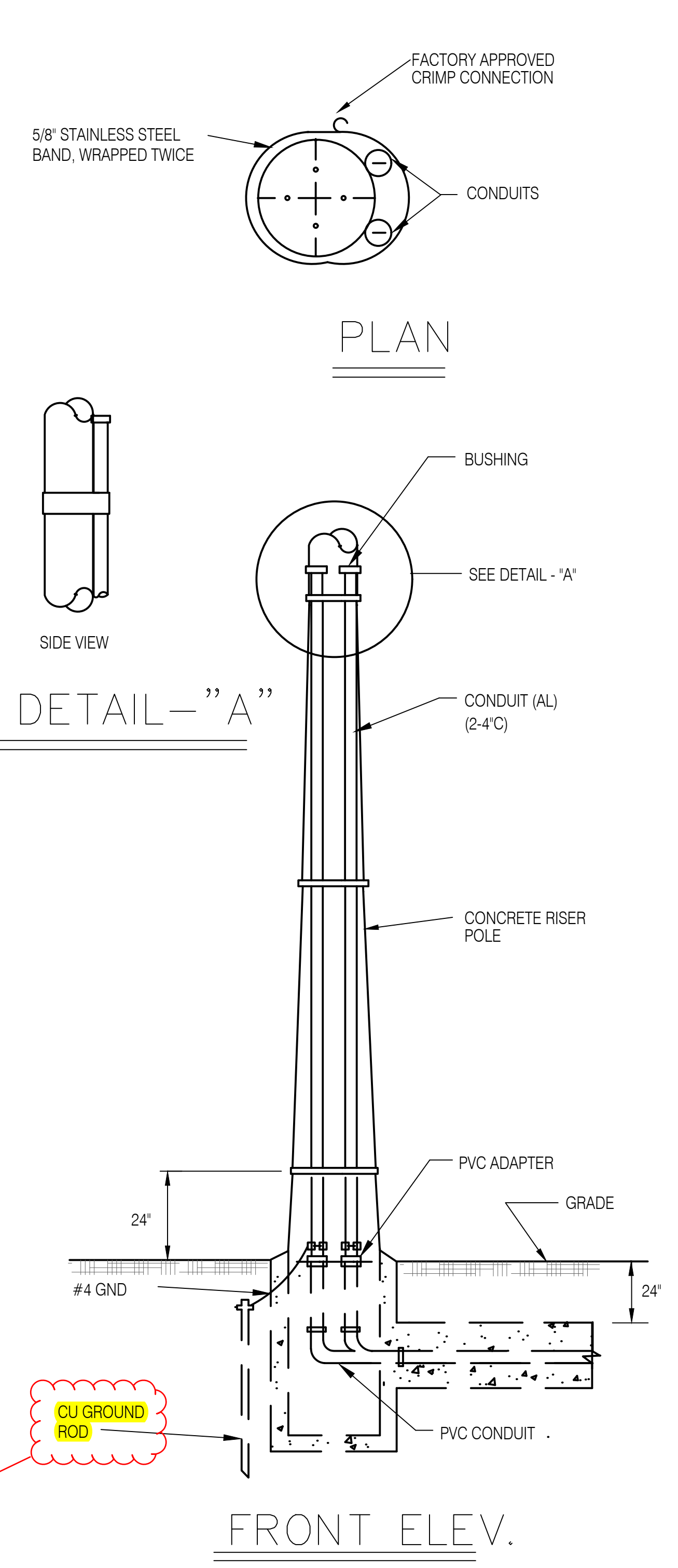
1 **5'X4'X4' HANDHOLE DETAIL**  
E501 NTS



NOTES:

- GROUND ALL HARDWARE IN HANDHOLE.
- TOP OF THE HANDHOLE SHOULD BE FLUSH WITH THE SIDEWALK SURFACE, OTHERWISE ALLOW A 2" CLEARANCE FROM REGULAR GROUND SURFACE.
- AREA OF CONDUIT ENTRANCE SHOULD BE 6" MINIMUM FROM THE FLOOR SLAB, 10" MINIMUM FROM THE LEFT OR RIGHT SIDEWALL AND 12" FROM TOP OF THE HANDHOLE.

2 **2' X4' HANDHOLE DETAIL**  
E501 NTS



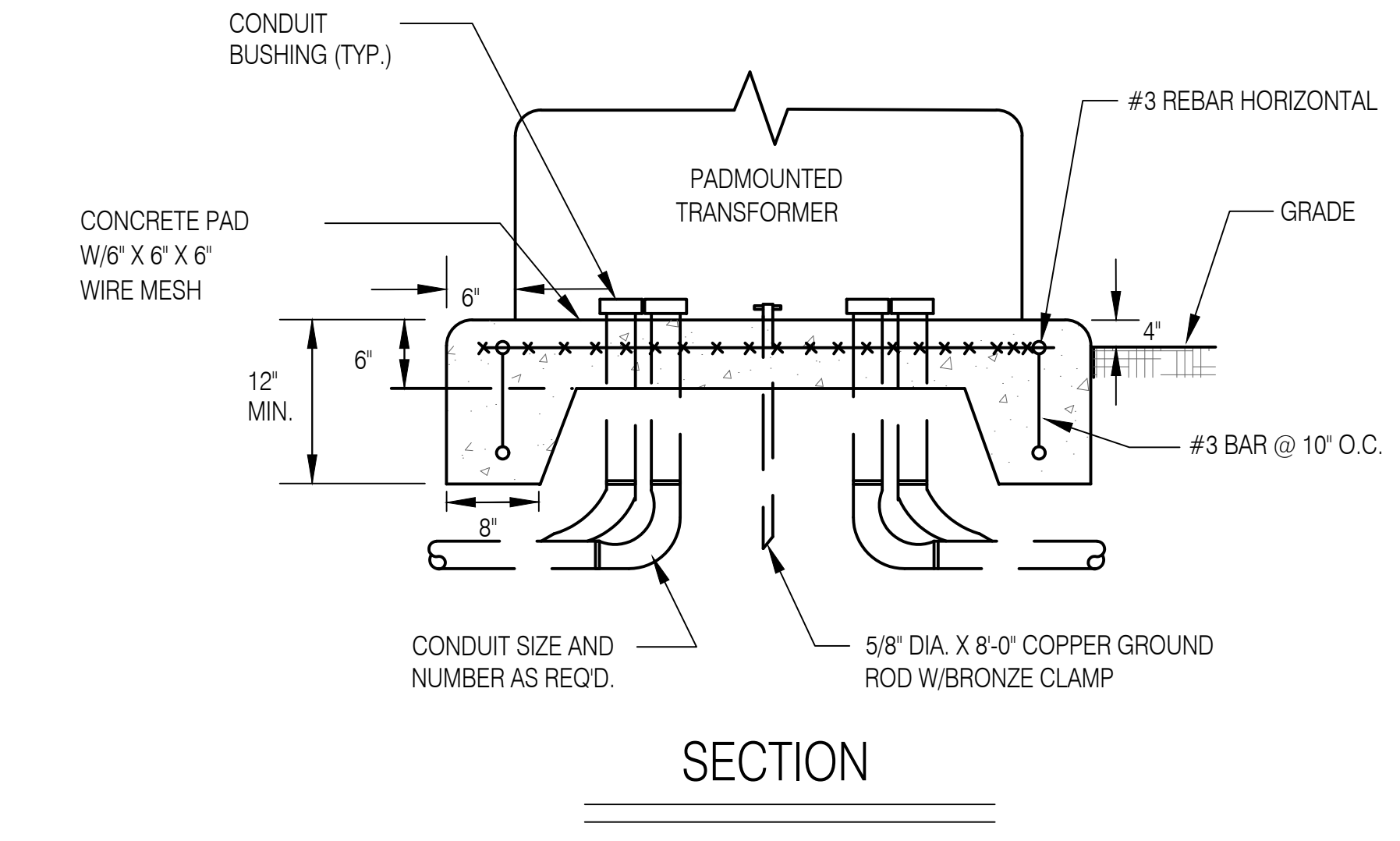
1. UNDERGROUND CONDUIT BANK, SIZE AND QUANTITY AS REQUIRED.

2. THE CONDUIT RISER SHALL BE APPROXIMATELY 30' UP THE POLE SIZE OF CONDUIT AND CONDUIT ACCESSORIES TO BE AS SHOWN.

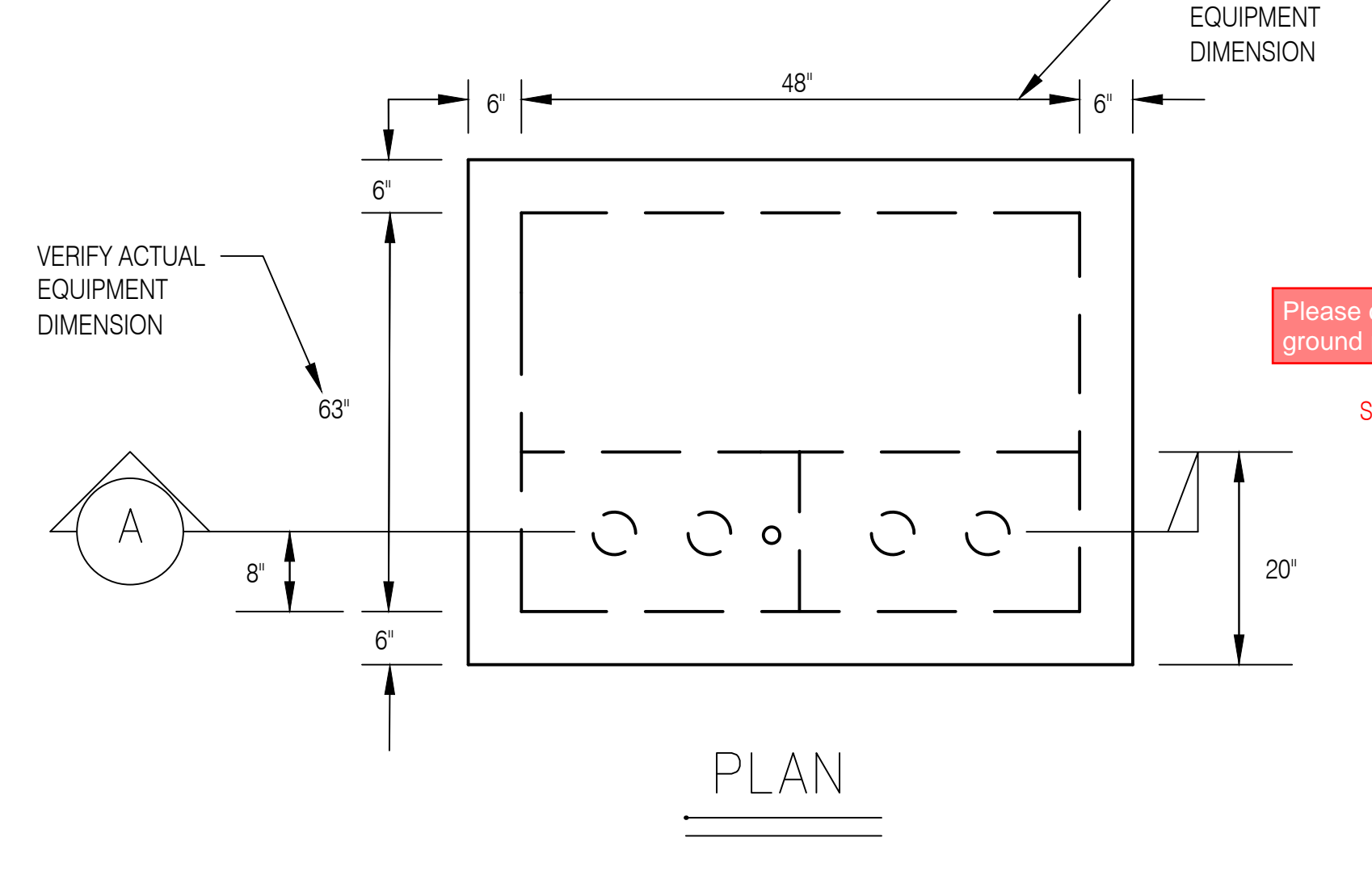
3. THE RIGID CONDUIT SHALL BE GROUNDED AND CONNECTED TO THE GROUND ROD.

4. THE RISER CONDUIT SHALL BE PROVIDED WITH PULL WIRE OR NYLON ROPE OF 200 LBS. PULL STRENGTH AND THE CONDUIT END SHALL BE CAPPED.

4 **POLE RISER DETAIL**  
E501 NTS



3 **PAD MOUNTED TRANSFORMER DETAIL**  
E501 NTS



VERIFY ACTUAL EQUIPMENT DIMENSION

# ATTACHMENT 4



**FUTURE  
WORLD  
CORPORATION** General Contractor

P.O. Box 12554 Tamuning, Guam 96931 • Telephone: 1(671) 649-4147/48/49 • Facsimile: 1(671) 649-4158  
e-mail: futureworld@guam.net • website: www.futureworldcorp.net

## REQUEST FOR INFORMATION

PROJECT: UOG IFB-23-01	RFI NO.	4
------------------------	---------	---

Subject: **Scope of Works** Date: **July 19, 2023**  
To: **UOG Procurement** From: **Arnold Felizardo**  
Company: Company: **Future World Corporation**  
Contact No.: Contact No.: **998-1008**

We are sending you attached via:  e-mail  hand carry

Specification Reference	Plan Reference	Discipline
-------------------------	----------------	------------

Item	Description
	<b>WERI BUILDING</b>
1	Please confirm if the Lab Cabinets, Sinks Fume Hoods and Snorkels are Owner Furnish, Contractor Install items. Items that is included in Drawing 1LF1.1-1LF3.5.
2	Please confirm if the scope of work included in the Building Access Management Software is the Dormakaba 790 lock system. If so, it shall be applicable to the Nursing Annex Building because Dormakaba 790 lock system is also included in the door Hardware.

### A & E Response:

**RIM Response  
7/20/2023**

- 1. Lab Cabinets, Sinks, Fume Hoods and Snorkels are Contractor Furnished-Contractor Installed.**
- 2. Building Access Management Software is included in the scope of work and is applicable to both WERI and Nursing.**

Received By: \_\_\_\_\_  
Representative

Submitted By:   
Arnold Felizardo / Proj. Engineer

Physical Address: 954 Army Drive, Barrigada Heights, Guam 96913 Telephone: 671-649-4147

Mailing Address: P.O. Box 12554, Tamuning, Guam 96931

Website: www.futureworldguam.com

## ATTACHMENT 5

### Weri Network Cabinet(s) requirements

- The Contractor shall provide proper grounding to the MDF/IDF locations/cabinets. The Contractor shall furnish and install a grounding bar for each network rack and equipment.
- The contractor shall provide two(2) dedicated outlets/circuits for each network cabinet.
- The contractor shall provide one(1) service electrical outlet.
- Network cabinets in classrooms or offices occupied by individuals will be required to install "soundproof" cabinets

### Network cabinet installed in secured rooms

- Mount: Floor-mounted
- enclosure: Locking cabinet vented at sides, front, top, and bottom
- Doors: Glass and vented
- Thread Type: cage nut
- Number of RU: Minimum 27 Rack Units/RU
- Cable management accessories

### Network cabinet installed in classrooms/office spaces

- Mount: wall-mounted
- Enclosure: Locking cabinet vented at sides, front, top, and bottom. The cabinet can "SWING" out.
- Doors: Glass and vented
- Thread Type: cage nut
- Number of RU: Minimum Rack Units/RU dependent on location
- Cable management accessories
- Network cabinets in classrooms or offices occupied by individuals will be required to install "soundproof" cabinets